

T M 1 1 - 5 8 1 5 - 3 1 0 - 3 4 P

TECHNICAL MANUAL

**DIRECT SUPPORT AND  
GENERAL SUPPORT  
MAINTENANCE REPAIR PARTS  
AND SPECIAL TOOLS LISTS  
(INCLUDING DEPOT  
MAINTENANCE REPAIR  
PARTS AND SPECIAL TOOLS)  
FOR  
CONTROL-MONITOR  
GROUP AN / FGA-10**

( N S N 5 8 1 8 - 0 0 - 9 9 9 - 7 3 1 4 )

H E A D Q U A R T E R S , D E P A R T M E N T O F T H E A R M Y

S E P T E M B E R 1 9 7 6

TECHNICAL MANUAL  
No. 11-5815-310-34P

HEADQUARTERS  
DEPARTMENT OF THE ARMY  
WASHINGTON, DC, 30 September 1976

**DIRECT SUPPORT AND GENERAL SUPPORT  
MAINTENANCE REPAIR PARTS AND SPECIAL TOOLS LISTS  
(INCLUDING DEPOT MAINTENANCE REPAIR PARTS AND SPECIAL TOOLS  
FOR  
CONTROL-MONITOR GROUP AN/FGA-10**

(NSN 5815-00-999-7314)

Current as of 1 August 1976

**REPORTING OF ERRORS**

**You can improve this manual by recommending improvements using DA Form 2028-2 (Test) located in the back of the manual. Simply tear out the self addressed form, fill it out as shown on the sample, fold it where shown, and drop it in the mail.**

**If there are no blank DA Form 2028-2 (Test) in the back of your manual, use the standard DA Form 2028 (Recommended Changes to Publications and Blank Forms) and forward to the Commander, US Army Electronics Command, ATTN: DRSEL-MA-Q, Fort Monmouth, New Jersey 07703.**

In either caase a **reply will be** furnished direct to you.

**Table of Contents**

	<b>m</b>	<b>=</b>
SECTION I. I. Introduction	1	
II. Repair parts list	5	
Group 00 Control-Monitor Group AN/FGA-10	5	1
01 Alarm-Monitor Unit MX-3945/FGA-10	7	2
0101 Alarm-monitor subassembly timing module (1A1)	11	3
0102 Alarm-monitor subassembly data resistor module (1A2)	15	4
0103 Alarm-monitor subassembly character matrix module (1A3)	19	5
0104 Alarm-monitor subassembly counter module (1A4)	23	6
0105 Alarm-monitor subassembly character sequence modules (1A5 thru 1A11)	27	7
0106 Alarm-monitor subassembly alarm control module (1A15)	31	8
0107 Power supply module (1A17)	35	9
0106 Alarm-monitor, chassis electrical assembly (1A16)	39	10-14
02 Control, Alarm-Monitor Unit C-4007/FGA-10	49	15
Section III. Special tools list (not applicable)		
IV National stock number and part number index	50	

\*This manual supermodes so much of TM 11-5815-310-35, 25 February 1969, as pertains to repair parts and special tools list..

# SECTION I

## INTRODUCTION

### 1. Scope

This manual lists repair parts and special tools required for performance of direct support and general support maintenance of the AN/FGA-10.

### 2. General

This Repair Parts and Special Tools List is divided into the following sections:

*a. Section II. Repair Parts List.* A list of repair parts authorized for use in the performance of maintenance. The list also includes parts which must be removed for replacement of the authorized parts. Parts lists are composed of functional groups in ascending numerical sequence, with the parts in each group listed in figure and item number sequence.

*b. Section III. Special Tools List.* Not applicable.

*c. Section IV. National Stock Number and Part Number Index.* A list, in ascending National item identification number (NIIN, last 9 digits) sequence, of all National stock numbers appearing in the listings, followed by a list, in alphameric sequence, of all part numbers appearing in the listings. National stock number and part numbers are cross-referenced to each illustration figure and item number appearance.

### 3. Explanation of Columns

The following provides an explanation of columns found in the tabular listings:

*a. Illustration.* This column is divided as follows:

(1) *Figure number.* Indicates the figure number of the illustration in which the item is shown.

(2) *Item number.* The number used to identify each item called out in the illustration.

*b. Source, Maintenance, and Recoverability Codes (SMR).*

(1) *Source code.* Source codes are assigned to support items to indicate the manner of acquiring support items for maintenance, repair, or overhaul of end items. Source codes are entered in the first and second positions of the Uniform SMR Code format as follows:

<i>Code</i>	<i>Definition</i>
PA	Item procured and stocked for anticipated or known usage.
PD	Support item, excluding support equipment,

<i>Code</i>	<i>Definition</i>
	procured for initial issue or outfitting and stocked only for subsequent or additional initial issues or outfittings. Not subject to automatic replenishment.
XA	Item is not procured or stocked because the requirements for the item will result in the replacement of the next higher assembly.
XD	A support item that is not stocked. When required, item will be procured through normal supply channels.

#### NOTE

Cannibalization or salvage may be used as a source of supply for any items source coded above except those coded XA, XD, and aircraft support items as restricted by AR 700-42.

(2) *Maintenance code.* Maintenance codes are assigned to indicate the levels of maintenance authorized to USE and REPAIR support items. The maintenance codes are entered in the third and fourth positions of the Uniform SMR Code format as follows:

(a) The maintenance code entered in the third position will indicate the lowest maintenance level authorized to remove, replace, and use the support item. The maintenance code entered in the fourth position will indicate one of the following levels of maintenance:

<i>Code</i>	<i>Application/Explanation</i>
O	Support item is removed, replaced, used at the organizational level.
F	Support item is removed, replaced, used at the direct support level.
H	Support item is removed, replaced, used at the general support level.

(b) The maintenance code entered in the fourth position indicates whether the item is to be repaired and identifies the lowest maintenance level with the capability to perform complete repair (i.e., all authorized maintenance functions). This position will contain one of the following maintenance codes:

<i>Code</i>	<i>Application/Explanation</i>
H	The lowest maintenance level capable of complete repair of the support item is the general support level.
Z	Nonreparable. No repair is authorized.

(3) *Recoverability code.* Recoverability codes

are assigned to support items to indicate the disposition action on unserviceable items. The recoverability code is entered in the fifth position of the Uniform SMR Code format as follows:

*Recoverability codes*

*Definition*

**Z**—Nonreparable item. When unserviceable, condemn and dispose at the level indicated in position 3.

**H**—Reparable item. When uneconomically reparable, condemn and dispose at the general support level.

**A**—Item requires special handling or condemnation procedures because of specific reasons (i.e., precious metal content, high dollar value, critical material or hazardous material). Refer to appropriate manuals/directives for specific instructions.

*c. National Stock Number.* Indicates the National stock number assigned to the item and will be used for requisitioning purposes.

*d. Part Number.* Indicates the primary number used by the manufacturer (individual, company, firm, corporation, or Government activity), which controls the design and characteristics of the item by means of its engineering drawings, specifications standards, and inspection requirements, to identify an item or range of items.

**NOTE**

When a stock numbered item is requisitioned, the repair part received may have a different part number than the part being replaced.

*e. Federal Supply Code for Manufacturer (FSCM).* The FSCM is a 5-digit numeric code listed in SB 708-42 which is used to identify the manufacturer, distributor, or Government agency, etc.

*f. Description.* Indicates the Federal item name and, if required, a minimum description to identify the item.

*g. Unit of Measure (U/M).* Indicates the standard of the basic quantity of the listed item as used in performing the actual maintenance function. This measure is expressed by a two-character alphabetical abbreviation (e.g., ea, in, pr, etc.). When the unit of measure differs from

the unit of issue, the lowest unit of issue that will satisfy the required units of measure will be requisitioned.

*h. Quantity Incorporated in Unit.* Indicates the quantity of the item used in the breakout shown on the illustration figure, which is prepared for a functional group, subfunctional group, or an assembly.

4. Special Information

The following publications pertain to the AN/FGC-10 and its components:

TM 11-5815-310-12, Control Monitor Group AN/FGA-10

TM 11-5815-310-35, Control Monitor Group AN/FGA-10

5. How to Locate Repair Parts

*a. When National stock number or part number is unknown.*

(1) *First.* Using the table of contents, determine the functional group within which the repair part belongs. This is necessary since illustrations are prepared for functional groups and listings are divided into the same groups.

(2) *Second.* Find the illustration covering the functional group to which the repair part belongs.

(3) *Third.* Identify the repair part on the illustration and note the illustration figure and item number of the repair part.

(4) *Fourth.* Using the Repair Parts Listing, find the figure and item number noted on the illustration.

*b. When National stock number or part number is known.*

(1) *First.* Using the Index of National Stock Numbers and Part Numbers, find the pertinent National stock number or part number. This index is in ascending NIIN sequence followed by a list of part numbers in ascending alphameric sequence, cross-referenced to the illustration figure number and item number.

(2) *Second.* After finding the figure and item number, locate the figure and item number in the repair parts list.

6. Abbreviations

Not applicable.

(Next printed page is 4)

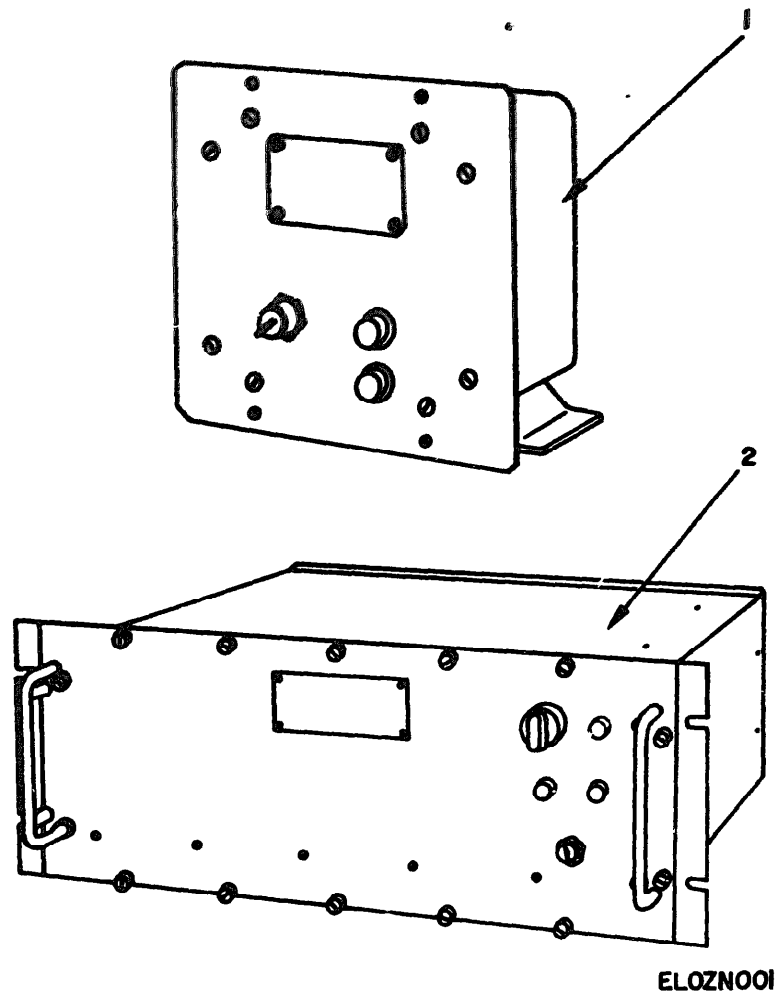


Figure 1. Control-Monitor Group AN/FGA-10.

SECTION II

TM 11-5815-310-34P

QUANTITY		UNIT	NATIONAL STOCK NUMBER	PART NUMBER	FROM	DESCRIPTION	USABLE ON CODE	QTY INC IN LAST
REQ	ORD							
1	1	PCBA	5115-00-999-7324	C4007FGALD	60058	GROUP 00 CONTROL-MONITOR GROUP AM/FGA-10		
1	2	PCBA	5115-00-999-7325	HE3945FGALD	60058	CENTRAL ALARM-MONITOR	EA	1
						ALARM-MONITOR UNIT	EA	1

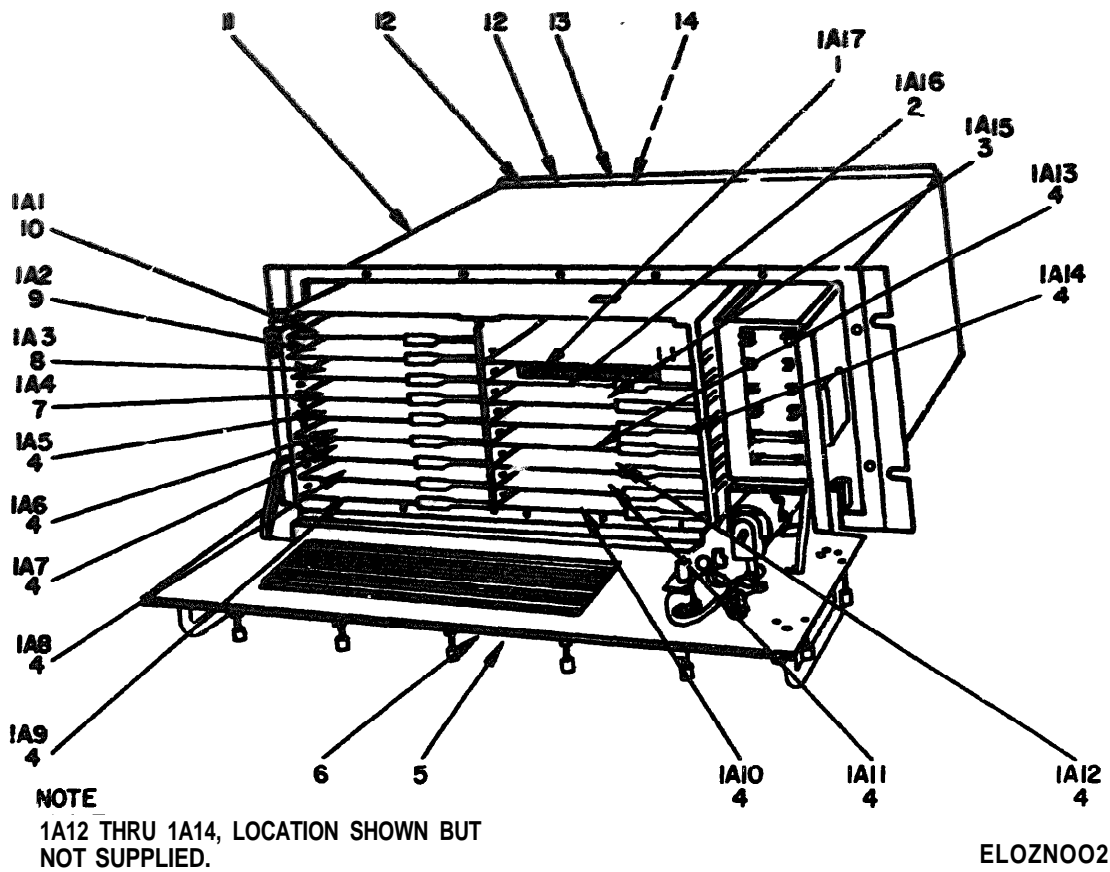


Figure 2. Alarm-Monitor Unit Mx-3945/fga-10.

SECTION II

TM 11-5815-310-34P

ILLUSTRATION			NATIONAL STOCK NUMBER	PART NUMBER	FIGURE	DESCRIPTION	USABLE QTY CODE	QTY	UNIT
QTY	QTY	QTY							
REQ	INST	CODE							
<b>GROUP G1 ALARM-MONITOR UNIT M2-3943/PGA-10</b>									
2	1	PAGE	5305-00-483-1518	9620005	96238	POWER SUPPLY MODULE		EA	1
2	2	PAGE	5305-00-111-2792	96200070	96238	ALARM-MONITOR SUBASSEMBLY EXTENSIVE MODULE		EA	1
2	3	PAGE	5305-00-111-2190	96200040	96238	ALARM-MONITOR SUBASSEMBLY ALARM-CONTROL MODULE		EA	1
2	4	PAGE	5305-00-111-2789	96200080	96238	ALARM-MONITOR SUBASSEMBLY CHARACTER SEQUENCE MODULES		EA	7
2	5	KDFZ		3703028	96238	PLATE, IDENTIFICATION		EA	1
2	6	KDFZ	5305-00-054-5644	M21997-11	96906	SCREEN, MACHINE		EA	4
2	7	PAGE	5305-00-111-2788	96200030	96238	ALARM-MONITOR SUBASSEMBLY COUNTER MODULE		EA	-
2	8	PAGE	5305-00-111-2787	96200020	96238	ALARM-MONITOR SUBASSEMBLY CHARACTER MATRIX MODULE		EA	1
2	9	PAGE	5815-00-111-2786	96200010	96238	ALARM-MONITOR SUBASSEMBLY DATA REGISTER MODULE		EA	1
2	10	PAGE	5815-00-111-2785	96200050	96238	ALARM-MONITOR SUBASSEMBLY TIMING MODULE		EA	1
2	11	KDFZ		0000	96238	CHASSIS ELECTRICAL EQUIPMENT		EA	1
2	12	KDFZ		0004	96238	COVER PLATE		EA	1
2	13	KDFZ	5305-00-054-6650	M21997-26	96906	SCREEN, MACHINE		EA	12
2	14	PAGE	5945-00-126-1743	48092014	96238	ALARM-MONITOR CHASSIS ELECTRICAL ASSEMBLY		EA	1



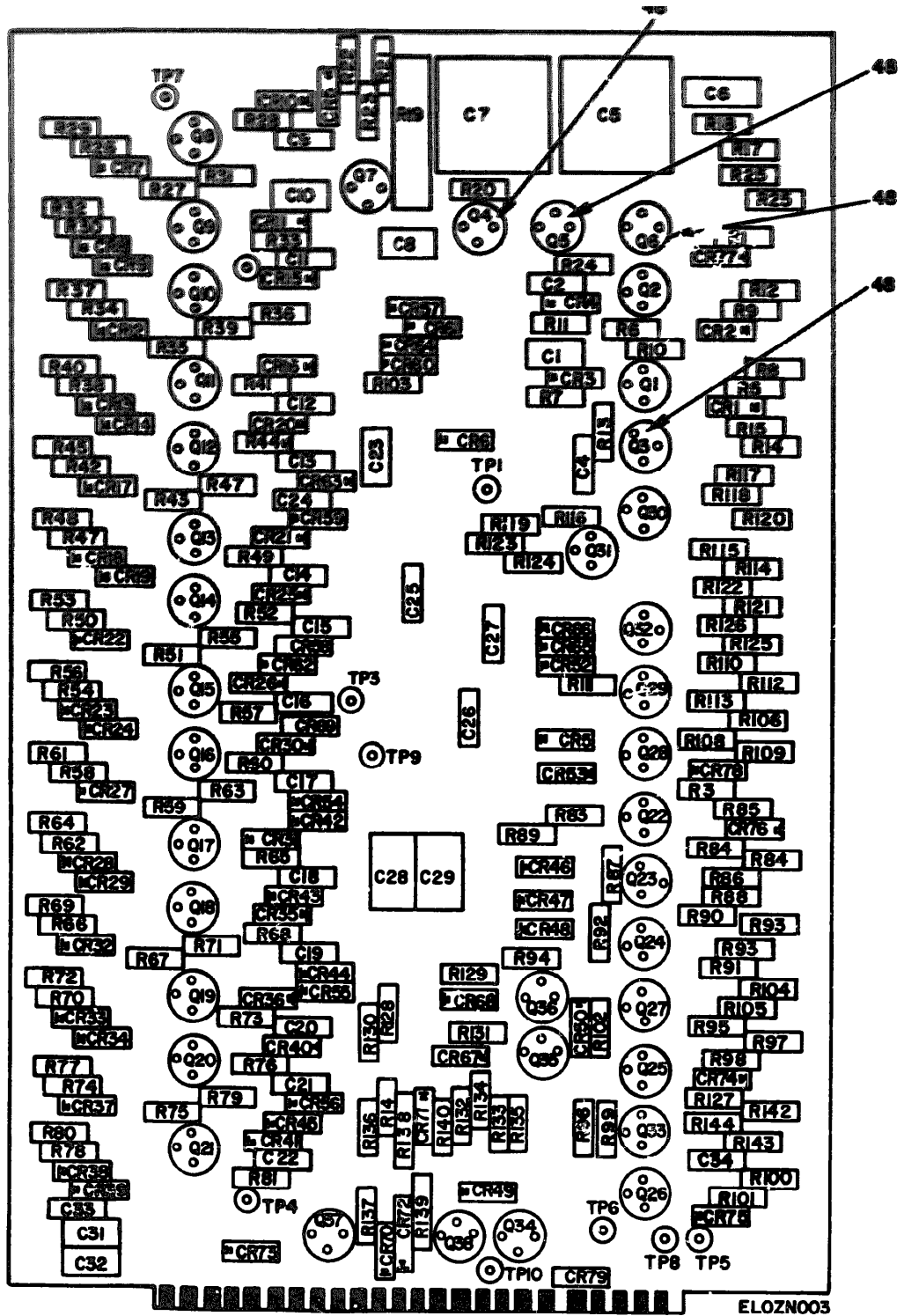


Figure 3. Alarm-Monitor Subassembly Timing Module (1A1) (Sheet 1 of 3).

REF DES	ITEM NO	REF DES	ITEM NO	REF DES	ITEM NO	REF DES	ITEM NO	REF DES	ITEM NO	REF DES	ITEM NO
C1	1	C27	1	CR19	10	CR44	10	CR69	10	Q15	12
C2	1	C28	6	CR20	11	CR45	10	CR70	10	Q16	12
C4	2	C29	6	CR21	11	CR46	10	CR71	10	Q17	12
C5	3	C31	7	CR22	10	CR47	11	CR72	10	Q18	12
C6	4	C32	7	CR23	10	CR48	11	CR73	10	Q19	12
C7	3	C33	8	CR24	10	CR49	10	CR74	10	Q20	12
C8	4	C34	9	CR25	11	CR50	10	CR75	10	Q21	12
C9	1	CR1	10	CR26	11	CR51	10	CR76	10	Q22	12
C10	1	CR2	10	CR27	10	CR52	10	CR77	10	Q23	12
C11	1	CR3	11	CR28	10	CR53	10	CR78	10	Q24	12
C12	1	CR4	11	CR29	10	CR54	10	CR79	11	Q25	12
C13	1	CR5	10	CR30	11	CR55	10	Q1	12	Q26	15
C14	1	CR6	10	CR31	11	CR56	10	Q2	12	Q27	12
C15	1	CR7	10	CR32	10	CR57	10	Q3	13	Q28	12
C16	1	CR8	10	CR33	10	CR58	10	Q4	13	Q29	12
C17	1	CR9	10	CR34	10	CR59	10	Q5	13	Q30	12
C18	1	CR10	11	CR35	11	CR60	10	Q6	13	Q31	12
C19	1	CR11	11	CR36	11	CR61	10	Q7	14	Q32	12
C20	1	CR12	10	CR37	10	CR62	10	Q8	12	Q33	12
C21	1	CR13	10	CR38	10	CR63	10	Q9	12	Q34	12
C22	1	CR14	10	CR39	10	CR64	10	Q10	12	Q35	12
C23	1	CR15	11	CR40	11	CR65	10	Q11	12	Q36	12
C24	1	CR16	11	CR41	11	CR66	10	Q12	12	Q37	15
C25	5	CR17	10	CR42	10	CR67	11	Q13	12	Q38	15
C26	1	CR18	10	CR43	10	CR68	11	Q14	12		

ELOZN004

Figure 3. Alarm-Monitor Subassembly Timing Module (1A1) (Sheet 2 of 3).

REF DES	ITEM NO	REF DES	ITEM NO	REF DES	ITEM NO	REF DES	ITEM NO	REF DES	ITEM NO	REF DES	ITEM NO
R1	16	R28	17	R33	18	R78	17	R105	17	R128	40
R3	16	R29	18	R34	17	R79	18	R104	38	R129	41
R5	17	R30	17	R35	18	R80	18	R105	32	R130	40
R6	18	R31	18	R36	19	R81	17	R106	37	R131	41
R7	17	R32	18	R37	17	R82	30	R107	18	R132	42
R8	18	R33	17	R38	17	R83	31	R108	38	R133	43
R9	17	R34	17	R39	18	R84	21	R109	32	R134	38
R10	18	R35	18	R40	17	R85	32	R110	30	R135	44
R11	17	R36	17	R41	18	R86	17	R111	31	R136	44
R12	18	R37	18	R42	17	R87	18	R112	21	R137	45
R13	20	R38	17	R43	18	R88	20	R113	32	R138	31
R14	21	R39	18	R44	19	R89	17	R114	30	R139	45
R15	22	R40	18	R45	17	R90	19	R115	30	R140	31
R16	23	R41	17	R46	17	R91	17	R116	31	R141	46
R17	24	R42	17	R47	18	R92	18	R117	21	R142	47
R18	25	R43	18	R48	17	R93	19	R118	32	R143	32
R19	26	R44	17	R49	19	R94	17	R119	31	R144	18
R20	27	R45	18	R70	17	R95	33	R120	21		
R21	23	R46	17	R71	18	R96	31	R121	37		
R22	28	R47	18	R72	19	R97	21	R122	37		
R23	25	R48	18	R73	17	R98	16	R123	16		
R24	28	R49	17	R74	17	R99	18	R124	16		
R25	29	R50	17	R75	18	R100	34	R125	38		
R26	17	R51	18	R76	17	R101	35	R126	32		
R27	18	R52	17	R77	19	R102	17	R127	39		

ELOZNO05

Figure 3. Alarm-Monitor Subassembly Timing Module (1A1) (Sheet 3 of 3).

SECTION II

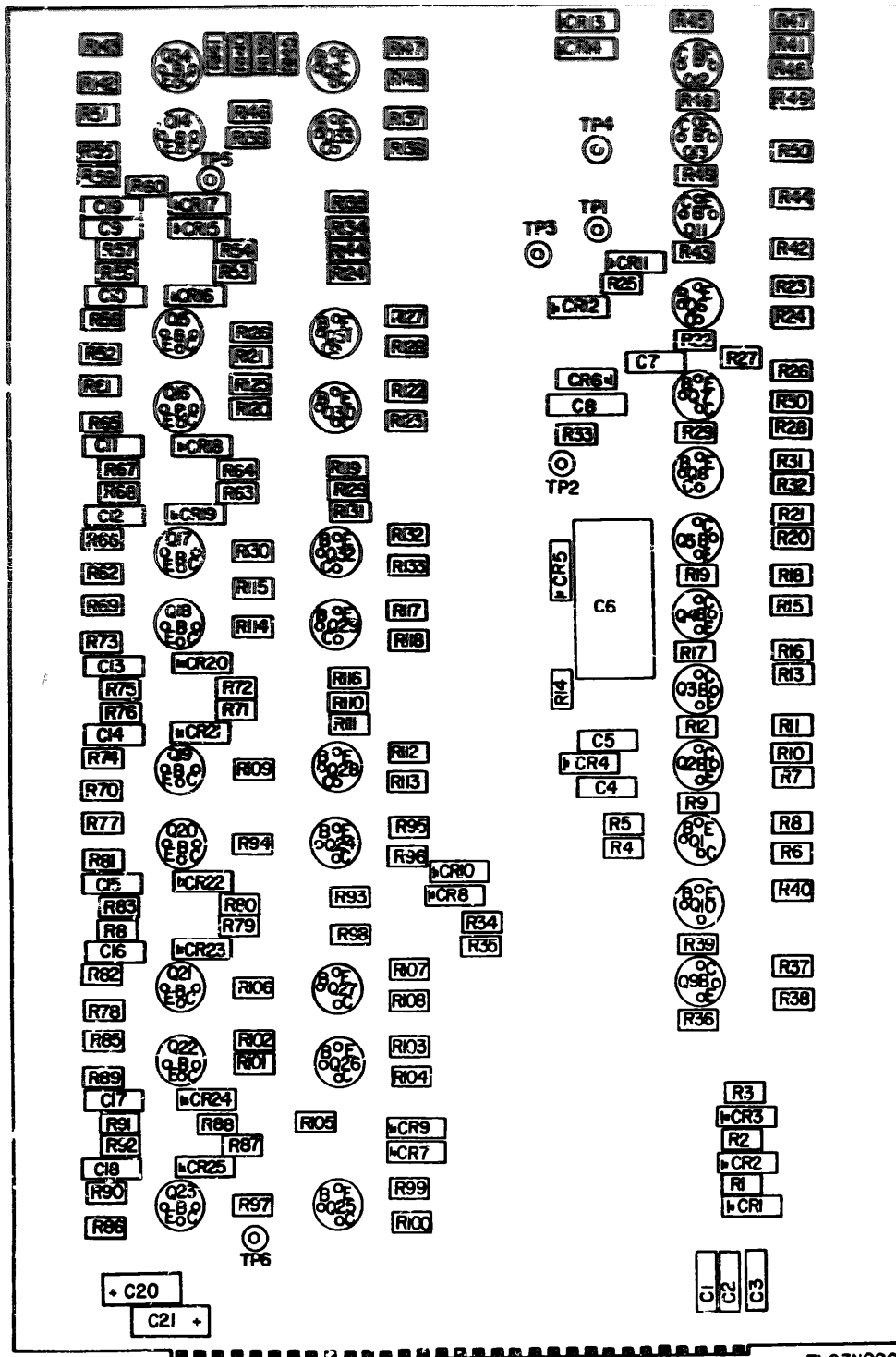
TM 11-5815-315-34P

CLASSIFICATION		NATIONAL STOCK NUMBER	PART NUMBER	QTY	DESCRIPTION	USABLE QTY CODE	QTY REQ ON SHIP
SEC NO.	GROUP NO.						
GROUP 0001 ALARM-MONITOR SUBASSEMBLY TIMING MODULE 1A1							
3	1	PANZZ	5905-00-936-2022	CE05F221J05	01349	CAPACITOR, FIXED, MICA	EA 20
3	2	PANZZ	5905-00-030-9621	CE06AN050R	01349	CAPACITOR, FIXED, CERAMIC	EA 1
3	3	PANZZ	5905-00-012-4990	CE07F203G05	01349	CAPACITOR, FIXED, MICA	EA 2
3	4	PANZZ	5905-00-02-2226	CE05F211J05	01349	CAPACITOR, FIXED, MICA	EA 2
3	5	PANZZ	5905-00-892-7334	CE13AN220R	01349	CAPACITOR, FIXED, CERAMIC	EA 1
3	6	PANZZ	5905-00-825-2723	CE130431J05	01349	CAPACITOR, FIXED, MICA	EA 2
3	7	PANZZ	5905-00-820-5430	CE1302225K	01349	CAPACITOR, FIXED, ELECTROLYTIC	EA 2
3	8	PANZZ	5905-00-777-4897	CE130475K	01349	CAPACITOR, FIXED, ELECTROLYTIC	EA 1
3	9	PANZZ	5905-00-289-4905	CE13AN72R	01349	CAPACITOR, FIXED, CERAMIC	EA 1
3	10	PANZZ	5941-00-649-6884	1M277	01349	SEMICONDUCTOR DEVICE, DIODE	EA 50
3	11	PANZZ	5941-00-842-9864	1M214	01349	SEMICONDUCTOR DEVICE, DIODE	EA 21
3	12	PANZZ	5941-00-842-4937	2N706	01349	TRANSISTOR	EA 30
3	13	PANZZ	5941-00-113-9364	2N1613	01349	TRANSISTOR	EA 4
3	14	PANZZ	5961-00-938-1747	2N2907	01349	TRANSISTOR	EA 1
3	15	PANZZ	5941-00-224-8984	2N2222	01349	TRANSISTOR	EA 3
3	16	PANZZ	5905-00-487-8082	RC07GF223J	01349	RESISTOR, FIXED, COMPOSITION	EA 6
3	17	PANZZ	5905-00-607-0000	RC07GF183J	01349	RESISTOR, FIXED, COMPOSITION	EA 30
3	18	PANZZ	5905-00-71-0907	RC07GF243J	01349	RESISTOR, FIXED, COMPOSITION	EA 20
3	19	PANZZ	5905-00-641-882	RC07GF274J	01349	RESISTOR, FIXED, COMPOSITION	EA 10
3	20	PANZZ	5905-00-686-3361	RC07GF203J	01349	RESISTOR, FIXED, COMPOSITION	EA 2
3	21	PANZZ	5905-00-621-8855	RC07GF394J	01349	RESISTOR, FIXED, COMPOSITION	EA 6
3	22	PANZZ	5905-00-681-8812	RC07GF153J	01349	RESISTOR, FIXED, COMPOSITION	EA 1
3	23	PANZZ	5905-00-961-4710	RN35E1002F	01349	RESISTOR, FIXED, FILM	EA 2
3	24	PANZZ	5905-00-228-9813	RN35E7152F	01349	RESISTOR, FIXED, FILM	EA 1
3	25	XDEZZ		RN35E8761F	01349	RESISTOR, FIXED, FILM	EA 2
3	26	PANZZ	5905-00-965-7652	3010P2-100	00294	RESISTOR, VARIABLE	EA 1
3	27	PANZZ	5905-00-111-6104	RN35E2262F	01349	RESISTOR, FIXED, FILM	EA 1
3	28	PANZZ	5905-00-803-2908	RC07GF303J	01349	RESISTOR, FIXED, COMPOSITION	EA 2
3	29	PANZZ	5905-00-681-8957	RC07GF474J	01349	RESISTOR, FIXED, COMPOSITION	EA 1
3	30	PANZZ	5905-00-800-0179	RC07GF563J	01349	RESISTOR, FIXED, COMPOSITION	EA 4
3	31	PANZZ	5905-00-686-3358	RC07GF393J	01349	RESISTOR, FIXED, COMPOSITION	EA 7
3	32	PANZZ	5905-00-686-3903	RC07GF333J	01349	RESISTOR, FIXED, COMPOSITION	EA 7
3	33	PANZZ	50905-00-681-8853	RC07GF683J	01349	RESISTOR, FIXED, COMPOSITION	EA 1
3	34	PANZZ	5905-00-6018854	RC07GF304J	01349	RESISTOR, FIXED, COMPOSITION	EA 1
3	35	PANZZ	5905-00-683-7724	RC07GF242J	01349	RESISTOR, FIXED, COMPOSITION	EA 1
3	36	PANZZ	5905-00-686-9995	RC07GF154J	01349	RESISTOR, FIXED, COMPOSITION	EA 1
3	37	PANZZ	5905-00-682-4105	RC07GF224J	01349	RESISTOR, FIXED, COMPOSITION	EA 3
3	38	PANZZ	5905-00-686-9993	RC07GF124J	01349	RESISTOR, FIXED, COMPOSITION	EA 3

SECTION II

TM 5815-310-34P

CLASSIFICATION		NATIONAL STOCK NUMBER	PART NAME	QTY	DESCRIPTION	UNIT	QTY
GROUP	ITEM						
3	40	5905-00-409-7786	RESISTOR	0.001	RESISTOR, FIXED, COMPOSITION	EA	1
3	40	5905-00-724-4481	RESISTOR	0.001	RESISTOR, FIXED, COMPOSITION	EA	2
3	40	5905-00-406-7808	RESISTOR	0.001	RESISTOR, FIXED, FILM	EA	2
3	40	5905-00-406-2087	RESISTOR	0.001	RESISTOR, FIXED, COMPOSITION	EA	1
3	40	5905-00-403-8226	RESISTOR	0.001	RESISTOR, FIXED, COMPOSITION	EA	1
3	40	5905-00-606-4887	RESISTOR	0.001	RESISTOR, FIXED, COMPOSITION	EA	2
3	40	5905-00-606-4600	RESISTOR	0.001	RESISTOR, FIXED, COMPOSITION	EA	2
3	40	5905-00-606-6149	RESISTOR	0.001	RESISTOR, FIXED, COMPOSITION	EA	1
3	40	5905-00-485-1101	RESISTOR	0.001	RESISTOR, FIXED, COMPOSITION	EA	1
3	40	5905-00-477-8597	RESISTOR	0.001	RESISTOR, FIXED	EA	4



ELOZNO06

Figure 4. Alarm-Monitor Subassembly Data Resistor Module (1A2) (Sheet 1 of 2).

REF DES.	ITEM NO.	REF DES.	ITEM NO.	REF DES.	ITEM NO.	REF DES.	ITEM NO.	REF DES.	ITEM NO.	REF DES.	ITEM NO.	REF DES.	ITEM NO.	REF DES.	ITEM NO.	REF DES.	ITEM NO.	REF DES.	ITEM NO.
C1	1	CR3	6	Q1	8	Q24	9	R12	17	R35	11	R58	33	R81	32	R104	25	R127	35
C2	1	CR4	6	Q2	8	Q25	9	R13	18	R36	28	R59	27	R82	32	R105	25	R128	36
C3	1	CR5	6	Q3	8	Q26	9	R14	19	R37	27	R60	17	R83	17	R106	25	R129	10
C4	2	CR6	6	Q4	9	Q27	9	R15	20	R38	21	R61	31	R84	17	R107	34	R130	10
C5	1	CR7	7	Q5	8	Q28	9	R16	21	R39	28	R62	31	R85	30	R108	25	R131	10
C6	3	CR8	7	Q6	8	Q29	9	R17	22	R40	21	R63	25	R86	30	R109	10	R132	35
C7	1	CR9	7	Q7	8	Q30	9	R18	13	R41	11	R64	25	R87	25	R110	10	R133	36
C8	4	CR10	7	Q8	8	Q31	9	R19	23	R42	11	R65	32	R88	25	R111	10	R134	10
C9	1	CR11	7	Q9	8	Q32	9	R20	24	R43	28	R66	32	R89	32	R112	35	R135	10
C10	1	CR12	7	Q10	8	Q33	9	R21	13	R44	21	R67	17	R90	32	R113	36	R136	10
C11	1	CR13	7	Q11	8	Q34	9	R22	23	R45	28	R68	17	R91	17	R114	10	R137	35
C12	1	CR14	7	Q12	8	Q35	9	R23	24	R46	21	R69	31	R92	17	R115	10	R138	36
C13	1	CR15	6	Q13	8	R1	10	R24	25	R47	29	R70	31	R93	25	R116	10	R139	10
C14	1	CR16	6	Q14	8	R2	10	R25	26	R48	30	R71	25	R94	25	R117	35	R140	10
C15	1	CR17	6	Q15	8	R3	10	R26	27	R49	16	R72	25	R95	34	R118	36	R141	10
C16	1	CR18	6	Q16	8	R4	11	R27	17	R50	29	R73	32	R96	25	R119	10	R142	35
C17	1	CR19	6	Q17	8	R5	12	R28	13	R51	31	R74	32	R97	25	R120	10	R143	36
C18	1	CR20	6	Q18	8	R6	13	R29	22	R52	31	R75	17	R98	25	R121	10	R144	10
C19	1	CR21	6	Q19	8	R7	14	R30	11	R53	25	R76	17	R99	34	R122	35	R145	10
C20	5	CR22	6	Q20	8	R8	15	R31	21	R54	25	R77	30	R100	25	R123	36	R146	10
C21	5	CR23	6	Q21	8	R9	10	R36	13	R55	32	R78	30	R101	25	R124	10	R147	35
CR1	6	CR24	6	Q22	8	R10	10	R33	12	R56	32	R79	25	R102	25	R125	10	R148	36
CR2	6	CR25	6	Q23	8	R11	16	R34	11	R57	33	R80	25	R103	34	R126	10	R149	17

ELOZNO07

Figure 4. Alarm-Monitor Subassembly Resistor Module 1A2) Sheet 2 of 2).

SECTION II

TM 5815-310-34P

ILLUSTRATION			NATIONAL STOCK NUMBER	PART NUMBER	QTY REQ	DESCRIPTION	UNABLE ON CODE	UNIT	QTY REQ UNIT
(A) FIG NO	(B) ITEM NO	GROUP CODE							
						GROUP 002 ALARM-MONITOR SUBASSEMBLY DATA RESISTOR MODULE DAZ			
40	1	PAN22	5910-00-151-2155	RC07GF223J	01349	CAPACITOR, FIXED, MICA		EA	16
40	2	PAN22	5910-00-081-8576	RC07GF223J	01349	CAPACITOR, FIXED, MICA		EA	1
40	3	PAN22	5910-00-950-7217	RC07GF223J	01349	CAPACITOR, FIXED, PLASTIC		EA	1
40	4	PAN22	5910-00-107-2100	RC07GF223J	01349	CAPACITOR, FIXED, ELECTROLYTIC		EA	1
40	5	PAN22	5910-00-080-9460	RC07GF223J	01349	CAPACITOR, FIXED, ELECTROLYTIC		EA	2
40	6	PAN22	4841-00-142-9064	W4024	01349	SEMICONDUCTOR DIODE, GEODE		EA	17
40	7	PAN22	5941-00-669-6484	W4024	01349	SEMICONDUCTOR DIODE, GEODE		EA	8
40	8	PAN22	5064-00-042-6957	Z4700	01349	TRANSISTOR		EA	22
40	9	PAN22	5941-00-225-0904	Z4722Z	01349	TRANSISTOR		EA	13
40	10	PAN22	5905-00-667-0002	RC07GF223J	01349	RESISTOR, FIXED, COMPOSITION		EA	20
40	11	PAN22	5905-00-681-0057	RC07GF223J	01349	RESISTOR, FIXED, COMPOSITION		EA	8
40	12	PAN22	5905-00-602-2231	RC07GF223J	01349	RESISTOR, FIXED, COMPOSITION		EA	2
40	13	PAN22	5905-00-720-4413	RC07GF223J	01349	RESISTOR, FIXED, COMPOSITION		EA	5
40	14	PAN22	5905-00-604-3354	RC07GF223J	01349	RESISTOR, FIXED, COMPOSITION		EA	1
40	15	PAN22	5905-00-602-4103	RC07GF224J	01349	RESISTOR, FIXED, COMPOSITION		EA	1
40	16	PAN22	5905-00-684-8419	RC07GF224J	01349	RESISTOR, FIXED, COMPOSITION		EA	2
40	17	PAN22	5905-00-607-8004	RC07GF223J	01349	RESISTOR, FIXED, COMPOSITION		EA	12
40	18	PAN22	5905-00-912-0472	RW95C1032F	01349	RESISTOR, FIXED, FILM		EA	1
40	19	PAN22	5905-00-972-3402	RW95C1032F	01349	RESISTOR, FIXED, FILM		EA	1
40	20	PAN22	5905-00-975-1650	RW95C1403F	01349	RESISTOR, FIXED, FILM		EA	1
40	21	PAN22	5905-00-686-3131	RC07GF334J	01349	RESISTOR, FIXED, COMPOSITION		EA	6
40	22	PAN22	5905-00-683-2244	RC07GF473J	01349	RESISTOR, FIXED, COMPOSITION		EA	2
40	23	PAN22	5905-00-602-4101	RC07GF752J	01349	RESISTOR, FIXED, COMPOSITION		EA	2
40	24	PAN22	5905-00-406-9993	RC07GF124J	01349	RESISTOR, FIXED, COMPOSITION		EA	2
40	25	PAN22	5905-00-121-0997	RC07GF243J	01349	RESISTOR, FIXED, COMPOSITION		EA	23
40	26	PAN22	5905-00-604-3364	RC07GF203J	01349	RESISTOR, FIXED, COMPOSITION		EA	1
40	27	PAN22	5905-00-606-3129	RC07GF104J	01349	RESISTOR, FIXED, COMPOSITION		EA	3
40	28	PAN22	5905-00-683-7726	RC07GF363J	01349	RESISTOR, FIXED, COMPOSITION		EA	4
40	29	PAN22	5905-00-464-3836	RC07GF273J	01349	RESISTOR, FIXED, COMPOSITION		EA	2
40	30	PAN22	5905-00-601-8818	RC07GF153J	01349	RESISTOR, FIXED, COMPOSITION		EA	5
40	31	PAN22	5905-00-831-6134	RC07GF022J	01349	RESISTOR, FIXED, COMPOSITION		EA	6
40	32	PAN22	5905-00-681-8822	RC07GF274J	01349	RESISTOR, FIXED, COMPOSITION		EA	10
40	33	PAN22	5905-00-726-3807	RC07GF912J	01349	RESISTOR, FIXED, COMPOSITION		EA	2
40	34	PAN22	5905-00-681-8821	RC07GF204J	01349	RESISTOR, FIXED, COMPOSITION		EA	4
40	35	PAN22	5905-00-684-9995	RC07GF154J	01349	RESISTOR, FIXED, COMPOSITION		EA	8
40	36	PAN22	5905-00-682-4103	RC07GF513J	01349	RESISTOR, FIXED, COMPOSITION		EA	8



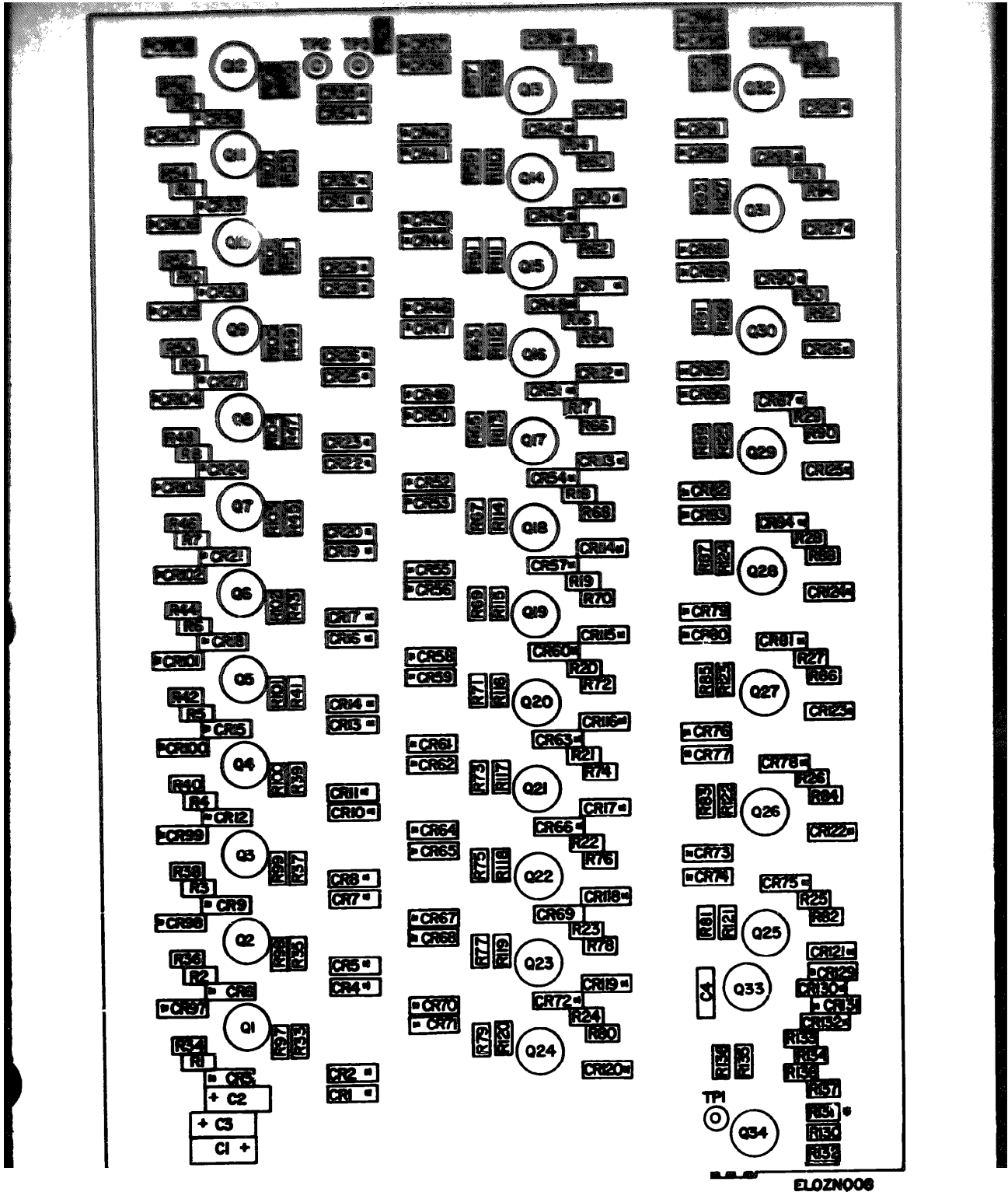


Figure 5. Alarm-Monitor Subassembly Character Matrix Module (1A3) (Sheet 1 of 2).

REF DES	ITEM NO	REF DES	ITEM NO	REF DES	ITEM NO	REF DES	ITEM NO	REF DES	ITEM NO	REF DES	ITEM NO	REF DES	ITEM NO	REF DES	ITEM NO	REF DES	ITEM NO	REF DES	ITEM NO	REF DES	ITEM NO	REF DES	ITEM NO
CR1	1	CR34	4	CR54	4	CR73	4	CR92	5	CR111	4	Q27	6	R20	8	R47	9	R74	10	R101	9	R128	9
CR2	2	CR35	4	CR55	4	CR74	4	CR93	5	Q1	6	Q28	6	R21	8	R48	10	R75	9	R102	9	R129	9
CR3	1	CR36	4	CR56	4	CR75	4	CR94	5	Q2	6	Q29	6	R22	8	R49	9	R76	10	R103	9	R130	11
CR4	3	CR37	4	CR57	4	CR76	4	CR95	5	Q3	6	Q30	6	R23	8	R50	10	R77	9	R104	9	R131	12
CR5	4	CR38	4	CR58	4	CR77	4	CR96	5	Q4	6	Q31	6	R24	8	R51	9	R78	10	R105	9		
CR6	4	CR39	4	CR59	4	CR78	4	CR97	5	Q5	6	Q32	6	R25	8	R52	10	R79	9	R106	9		
CR7	4	CR40	4	CR60	4	CR79	4	CR98	5	Q6	6	Q33	7	R26	8	R53	9	R80	10	R107	9		
CR8	4	CR41	4	CR61	4	CR80	4	CR99	5	Q7	6	Q34	6	R27	8	R54	10	R81	9	R108	9		
CR9	4	CR42	4	CR62	4	CR81	4	CR100	5	Q8	6	R1	8	R28	8	R55	9	R82	10	R109	9		
CR10	4	CR43	4	CR63	4	CR82	4	CR101	5	Q9	6	R2	8	R29	8	R56	10	R83	9	R110	9	R132	13
CR11	4	CR44	4	CR64	4	CR83	4	CR102	5	Q10	6	R3	8	R30	8	R57	9	R84	10	R111	9	R133	14
CR12	4	CR45	4	CR65	4	CR84	4	CR103	5	Q11	6	R4	8	R31	9	R58	10	R85	9	R112	9	R134	14
CR13	4	CR46	4	CR66	4	CR85	4	CR104	5	Q12	6	R5	8	R32	8	R59	9	R86	10	R113	9	R135	15
CR14	4	CR47	4	CR67	4	CR86	4	CR105	5	Q13	6	R6	8	R33	9	R60	10	R87	9	R114	9	R136	15
CR15	4	CR48	4	CR68	4	CR87	4	CR106	5	Q14	6	R7	8	R34	10	R61	9	R88	10	R115	9	R137	16
CR16	4	CR49	4	CR69	4	CR88	4	CR107	5	Q15	6	R8	8	R35	9	R62	10	R89	9	R116	9	R138	17
CR17	4	CR50	4	CR70	4	CR89	4	CR108	5	Q16	6	R9	8	R36	10	R63	9	R90	10	R117	9		
CR18	4	CR51	4	CR71	4	CR90	4	CR109	5	Q17	6	R10	8	R37	9	R64	10	R91	9	R118	9		
CR19	4	CR52	4	CR72	4	CR91	4	CR110	5	Q18	6	R11	8	R38	10	R65	9	R92	10	R119	9		
CR20	4	CR53	4	CR73	4	CR92	4	CR111	5	Q19	6	R12	8	R39	9	R66	10	R93	9	R120	9		
CR21	4	CR54	4	CR74	4	CR93	4	CR112	5	Q20	6	R13	8	R40	10	R67	9	R94	10	R121	9		
CR22	4	CR55	4	CR75	4	CR94	4	CR113	5	Q21	6	R14	8	R41	9	R68	10	R95	9	R122	9		
CR23	4	CR56	4	CR76	4	CR95	4	CR114	5	Q22	6	R15	8	R42	10	R69	9	R96	10	R123	9		
CR24	4	CR57	4	CR77	4	CR96	4	CR115	5	Q23	6	R16	8	R43	9	R70	10	R97	9	R124	9		
CR25	4	CR58	4	CR78	4	CR97	4	CR116	5	Q24	6	R17	8	R44	10	R71	9	R98	9	R125	9		
CR26	4	CR59	4	CR79	4	CR98	4	CR117	5	Q25	6	R18	8	R45	9	R72	10	R99	9	R126	9		
CR27	4	CR60	4	CR80	4	CR99	4	CR118	5	Q26	6	R19	8	R46	10	R73	9	R100	9	R127	9		

Figure 5. Alarm-Monitor Subassembly Character Matrix Module (1A3) (Sheet 2 of 2).

SECTION II

TM 11-5815-310-34P

(1) CLASSIFICATION		(2) YEAR	(3) PAGE	(4) NATIONAL STOCK NUMBER	(5) PAGE NUMBER	(6) PAGE	(7) DESCRIPTION	(8) USABLE QTY CODE	(9) QTY	(10) UNIT
GROUP: GPO ALARM-REORDER ARRANGEMENT										
CHARACTER SYMBOL NUMBER 143										
5	1	PAGE		5910-00-8739473	0220274	0220	ALARM, FIELD, ELECTRONIC		2	
5	2	PAGE		5910-00-977-6637	0220274	0220	ALARM, FIELD, ELECTRONIC		2	
5	3	PAGE		5910-00-8399482	0220274	0220	ALARM, FIELD, GENERAL		1	
5	4	PAGE		5901-00-669-6884	12697	0220	ALARM-REORDER SYSTEM, BUREAU		97	
5	5	PAGE		5901-00-022-4884	12694	0220	ALARM-REORDER SYSTEM, BUREAU		35	
5	6	PAGE		5901-00-842-6937	24706	0220	ALARM-REORDER		33	
5	7	PAGE		5901-00-200-0979	24700	0220	ALARM-REORDER		2	
5	8	PAGE		5901-00-681-6810	100701430	0220	REORDER, FIELD, COMPOSITION		2	
5	9	PAGE		5901-00-721-6357	100701430	0220	REORDER, FIELD, COMPOSITION		65	
5	10	PAGE		5905-00-641-6823	100701430	0220	REORDER, FIELD, COMPOSITION		32	
5	11	PAGE		5905-00-589-5872	100701430	0220	REORDER, FIELD, FIELD		1	
5	12	PAGE		5905-00-685-5303	100701430	0220	REORDER, FIELD, COMPOSITION SELECT		1	
5	12	PAGE		5905-00-683-2316	100701430	0220	REORDER, FIELD, COMPOSITION SELECT		1	
5	12	PAGE		5905-00-662-6853	100701430	0220	REORDER, FIELD, COMPOSITION SELECT		1	
5	12	PAGE		5905-00-686-3229	100701430	0220	REORDER, FIELD, COMPOSITION SELECT		1	
5	12	PAGE		5905-00-686-9999	100701430	0220	REORDER, FIELD, COMPOSITION SELECT		1	
5	12	PAGE		5905-00-662-4103	100701430	0220	REORDER, FIELD, COMPOSITION SELECT		1	
5	13	PAGE		5905-00-603-4101	100701430	0220	REORDER, FIELD, COMPOSITION		1	
5	14	PAGE		5905-00-682-8853	100701430	0220	REORDER, FIELD, COMPOSITION		2	
5	15	PAGE		5905-00-603-2246	100701430	0220	REORDER, FIELD, COMPOSITION		2	
5	16	PAGE		5905-00-641-132	100701430	0220	REORDER, FIELD, COMPOSITION		1	
5	17	PAGE		590500-642-3903	100701430	0220	REORDER, FIELD, COMPOSITION		1	



REF DES.	ITEM NO.	REF DES.	ITEM NO.	REF DES.	ITEM NO.	REF DES.	ITEM NO.	REF DES.	ITEM NO.	REF DES.	ITEM NO.	REF DES.	ITEM NO.	REF DES.	ITEM NO.	REF DES.	ITEM NO.		
C1	1	CR2	4	CR22	4	CR42	4	Q5	6	R2	9	R23	17	R43	18	R63	18	R84	14
C2	1	CR3	4	CR23	5	CR43	5	Q6	7	R3	10	R24	11	R44	19	R64	20	R85	14
C3	1	CR4	4	CR24	5	CR44	5	Q7	6	R4	11	R25	14	R45	19	R65	20	R86	18
C4	1	CR5	4	CR25	5	CR45	5	Q8	6	R5	12	R26	18	R46	18	R66	18	R87	20
C5	1	CR6	5	CR26	4	CR46	4	Q9	6	R6	13	R27	19	R47	18	R67	18	R88	21
C6	1	CR7	5	CR27	4	CR47	4	Q10	6	R7	14	R28	18	R48	20	R68	19	R89	11
C7	1	CR8	5	CR28	5	CR48	5	Q11	6	R8	11	R29	20	R49	20	R69	19	R90	14
C8	1	CR9	5	CR29	5	CR49	5	Q12	6	R9	12	R30	18	R50	18	R70	18	R91	14
C9	1	CR10	5	CR30	5	CR50	5	Q13	6	R10	13	R31	19	R51	18	R71	18	R92	18
C10	1	CR11	5	CR31	4	CR51	4	Q14	6	R11	11	R32	18	R52	19	R72	20	R93	20
C11	1	CR12	5	CR32	4	CR52	5	Q15	6	R12	8	R33	20	R53	19	R73	20	R94	21
C12	1	CR13	4	CR33	5	CR53	4	Q16	6	R13	9	R34	18	R54	18	R74	18	R95	22
C13	1	CR14	4	CR34	5	CR54	5	Q17	6	R14	14	R35	18	R55	18	R75	18	R96	12
C14	1	CR15	4	CR35	5	CR55	4	Q18	6	R15	11	R36	19	R56	20	R76	19	R97	13
C15	1	CR16	4	CR36	4	CR56	4	Q19	6	R16	12	R37	19	R57	20	R77	19	R98	14
C16	1	CR17	4	CR37	4	CR57	4	Q20	6	R17	13	R38	18	R58	18	R78	18		
C17	2	CR18	5	CR38	5	Q1	6	Q21	6	R18	14	R39	18	R59	18	R79	18		
C18	3	CR19	5	CR39	5	Q2	6	Q22	6	R19	15	R40	20	R60	19	R80	20		
C19	2	CR20	5	CR40	5	Q3	6	Q23	6	R20	16	R41	20	R61	19	R81	20		
CR1	4	CR21	4	CR41	4	Q4	6	R1	8	R21	17	R42	18	R62	18	R83	11		

ELOZNOII

Figure 6. Alarm-Monitor Subassembly Counter Module (1A4) (Sheet 2 of 2).

SECTION II

TM 11-5815-310-34P

ELECTRONIC			NATIONAL STOCK NUMBER	PART NUMBER	QTY	DESCRIPTION	USABLE CN CODE	U/M	QTY IN U/M
QTY REQ	QTY IN	QTY CODE							
<b>GROUP 024: ALARM-ARMED ASSEMBLY</b>									
<b>COUNTER MODEL 24</b>									
6	1	XXXX	5910-00-489-9408	01340	01340	CAPACITOR, FIXED, mica		EA	26
6	2	PAGE2	5910-00-717-4497	01340	01340	CAPACITOR, FIXED, ELECTROLYTIC		EA	2
6	4	PAGE2	5901-00-469-6284	01340	01340	CAPACITOR, FIXED, ELECTROLYTIC		EA	1
6	6	PAGE2	5901-00-062-9264	01340	01340	SEMICONDUCTOR, DIODE, GERM		EA	27
6	8	PAGE2	5901-00-862-04987	01340	01340	SEMICONDUCTOR, DIODE, GERM		EA	30
6	7	PAGE2	5901-00-284-0984	01340	01340	TRANSISTOR		EA	22
6	8	PAGE2	5901-00-486-1398	01340	01340	TRANSISTOR		EA	1
6	9	PAGE2	5901-00-601-0895	01340	01340	RESISTOR, FIXED, COMPOSITION		EA	2
6	10	PAGE2	5905-00-082-0879	01340	01340	RESISTOR, FIXED, COMPOSITION		EA	2
6	11	PAGE2	5905-00-408-0002	01340	01340	RESISTOR, FIXED, COMPOSITION		EA	3
6	12	PAGE2	5905-00-082-7721	01340	01340	RESISTOR, FIXED, COMPOSITION		EA	3
6	13	PAGE2	5905-00-604-3137	01340	01340	RESISTOR, FIXED, COMPOSITION		EA	4
6	14	PAGE2	5905-00-606-3483	01340	01340	RESISTOR, FIXED, COMPOSITION		EA	4
6	15	PAGE2	5905-00-687-0082	01340	01340	RESISTOR, FIXED, COMPOSITION		EA	9
6	16	PAGE2	5905-00-606-3364	01340	01340	RESISTOR, FIXED, COMPOSITION		EA	1
6	17	PAGE2	5905-00-725-4423	01340	01340	RESISTOR, FIXED, COMPOSITION		EA	1
6	18	PAGE2	5905-00-687-0064	01340	01340	RESISTOR, FIXED, COMPOSITION		EA	2
6	19	PAGE2	5905-00-722-6597	01340	01340	RESISTOR, FIXED, COMPOSITION		EA	30
6	20	PAGE2	5905-00-601-0022	01340	01340	RESISTOR, FIXED, COMPOSITION		EA	14
6	21	PAGE2	5905-00-601-8318	01340	01340	RESISTOR, FIXED, COMPOSITION		EA	16
6	22	PAGE2	5905-00-683-2244	01340	01340	RESISTOR, FIXED, COMPOSITION		EA	2
6				01340	01340	RESISTOR, FIXED, COMPOSITION		EA	1

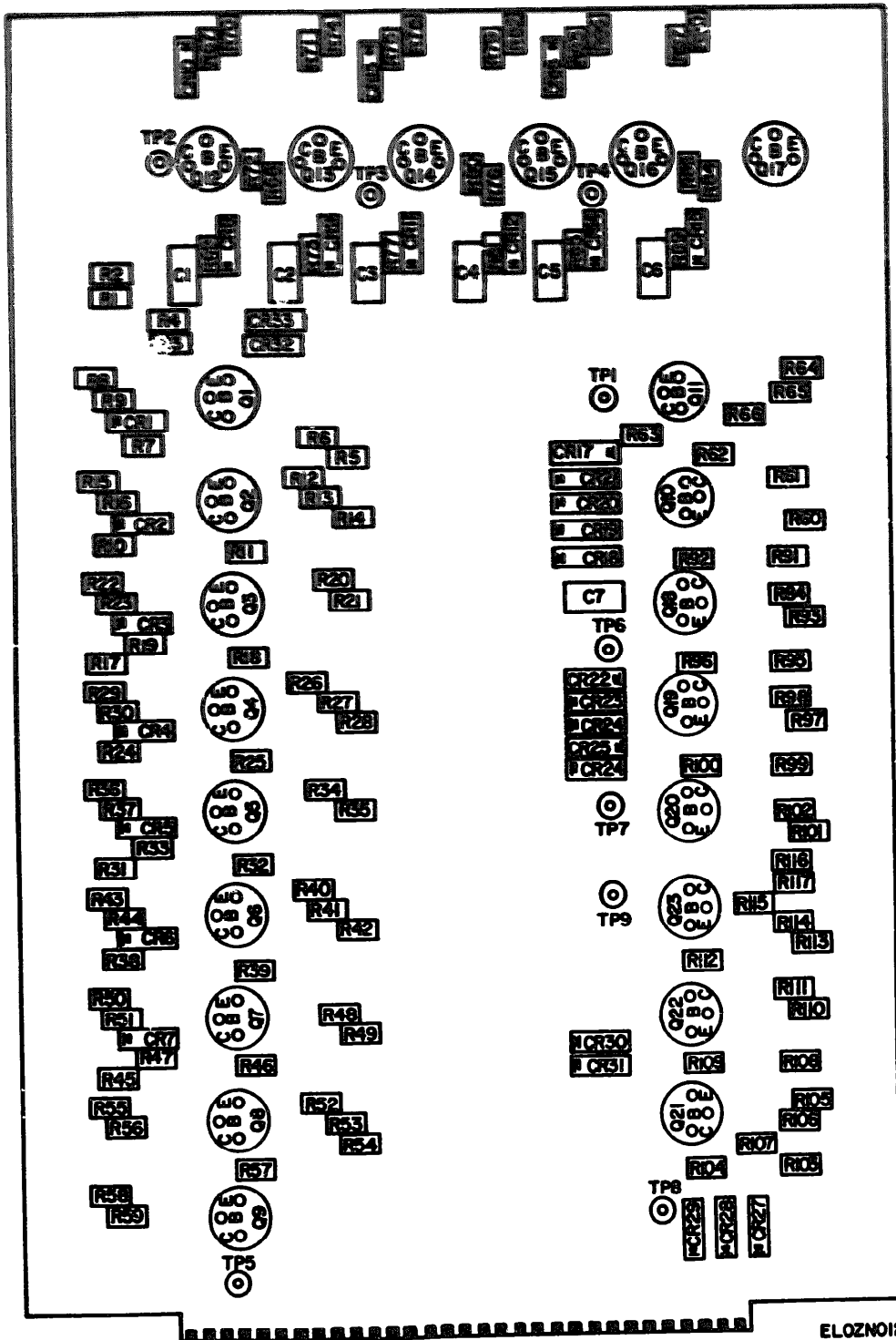


Figure 7. Alarm-Monitor Subassembly Character Sequence Modules (1A5 thru 1A11) (Sheet 1 of 2).

REF. DES.	ITEM NO.	REF. DES.	ITEM NO.	REF. DES.	ITEM NO.	REF. DES.	ITEM NO.	REF. DES.	ITEM NO.	REF. DES.	ITEM NO.	REF. DES.	ITEM NO.	REF. DES.	ITEM NO.		
C1	1	CR14	3	Q1	5	Q21	5	R18	7	R38	6	R58	12	R78	20	R98	11
C2	1	CR15	3	Q2	5	Q22	5	R19	7	R39	7	R59	13	R79	17	R99	13
C3	1	CR16	3	Q3	5	Q23	5	R20	7	R40	7	R60	14	R80	18	R100	23
C4	1	CR17	4	Q4	5	R1	6	R21	7	R41	7	R61	11	R81	13	R101	8
C5	1	CR18	4	Q5	5	R2	6	R22	8	R42	7	R62	13	R82	20	R102	11
C6	1	CR19	4	Q6	5	R3	7	R23	9	R43	8	R63	13	R83	17	R103	10
C7	2	CR20	4	Q7	5	R4	7	R24	6	R44	9	R64	15	R84	18	R104	24
CR1	3	CR21	4	Q8	5	R5	7	R25	7	R45	6	R65	11	R85	13	R105	14
CR2	3	CR22	4	Q9	5	R6	7	R26	7	R46	7	R66	16	R86	20	R106	7
CR3	3	CR23	4	Q10	5	R7	7	R27	7	R47	7	R67	17	R87	17	R107	13
CR4	3	CR24	4	Q11	5	R8	8	R28	7	R48	7	R68	18	R88	18	R108	21
CR5	3	CR25	4	Q12	5	R9	9	R29	8	R49	7	R69	19	R89	13	R109	22
CR6	3	CR26	4	Q13	5	R10	6	R30	9	R50	8	R70	20	R90	20	R110	12
CR7	3	CR27	4	Q14	5	R11	7	R31	6	R51	9	R71	17	R91	21	R111	10
CR8	3	CR28	4	Q15	5	R12	7	R32	7	R52	7	R72	18	R92	22	R112	24
CR9	3	CR29	4	Q16	5	R13	7	R33	7	R53	7	R73	19	R93	12	R113	14
CR10	3	CR30	4	Q17	5	R14	7	R34	7	R54	7	R74	20	R94	11	R114	7
CR11	3	CR31	4	Q18	5	R15	8	R35	7	R55	8	R75	17	R95	21	R115	13
CR12	3	CR32	3	Q19	5	R16	9	R36	8	R56	10	R76	18	R96	22	R116	21
CR13	3	CR33	3	Q20	5	R17	6	R37	9	R57	11	R77	13	R97	12	R117	21

ELOZNO13

Figure 7. Alarm-Monitor Subassembly Character Sequence Modules (1A5 thru 1A11) (Sheet 2 of 2).



SECTION II

TM 11-5815-310-34P

CLASSIFICATION			NATIONAL STOCK NUMBER	PART NUMBER	FORM	DESCRIPTION	USABLE ON CODE	QTY	UNIT
GROUP	ITEM	CODE							
						GROUP ONE ALARM-REGISTER BANGSOMAN			
						QUANTITY CHANGE MINUTES DIAL			
						TRIM RING			
70	1	PANEE	5910-00-601-2135	RC07F23100	00300	CAPACITOR, FIXED, 100A		EA	6
70	2	PANEE	5910-00-062-2377	RC07F23100	00300	CAPACITOR, FIXED, 100A		EA	1
70	3	PANEE	5910-00-912-9169	RC07F23100	00300	SEMICONDUCTOR DEVICE, DIODE		EA	10
70	4	PANEE	5910-00-660-3690	RC07F23100	00300	SEMICONDUCTOR DEVICE, DIODE		EA	10
70	5	PANEE	5901-00-062-6567	RC07F23100	00300	TRANSISTOR		EA	25
70	6	PANEE	5905-00-006-0069	RC07F23100	00300	RESISTOR, FIXED, COMPOSITION		EA	0
70	7	PANEE	5905-00-665-7668	RC07F23100	00300	RESISTOR, FIXED, COMPOSITION		EA	30
70	8	PANEE	5905-00-602-4003	RC07F23100	00300	RESISTOR, FIXED, COMPOSITION		EA	9
70	9	PANEE	5905-00-406-3123	RC07F23100	00300	RESISTOR, FIXED, COMPOSITION		EA	7
70	10	PANEE	5905-00-603-2864	RC07F23100	00300	RESISTOR, FIXED, COMPOSITION		EA	3
70	11	PANEE	5905-00-406-3903	RC07F23100	00300	RESISTOR, FIXED, COMPOSITION		EA	6
70	12	PANEE	5905-00-606-3147	RC07F23100	00300	RESISTOR, FIXED, COMPOSITION		EA	4
70	13	PANEE	5905-00-607-0808	RC07F23100	00300	RESISTOR, FIXED, COMPOSITION		EA	10
70	14	PANEE	5905-00-602-0604	RC07F23100	00300	RESISTOR, FIXED, COMPOSITION		EA	3
70	15	PANEE	5905-00-606-9699	RC07F23100	00300	RESISTOR, FIXED, COMPOSITION		EA	1
70	16	PANEE	5905-00-607-0802	RC07F23100	00300	RESISTOR, FIXED, COMPOSITION		EA	1
70	17	PANEE	5905-00-606-3124	RC07F23100	00300	RESISTOR, FIXED, COMPOSITION		EA	6
70	18	PANEE	5905-00-134-0895	RC07F23100	00300	RESISTOR, FIXED, COMPOSITION		EA	6
70	19	PANEE	5905-00-481-2284	RC07F23100	00300	RESISTOR, FIXED, COMPOSITION		EA	2
70	20	PANEE	5905-00-684-8484	RC07F23100	00300	RESISTOR, FIXED, COMPOSITION		EA	4
70	21	PANEE	5905-00-681-6894	RC07F23100	00300	RESISTOR, FIXED, COMPOSITION		EA	5
70	22	PANEE	5905-00-613-7724	RC07F23100	00300	RESISTOR, FIXED, COMPOSITION		EA	3
70	23	PANEE	5905-00-726-4413	RC07F23100	00300	RESISTOR, FIXED, COMPOSITION		EA	1
70	24	PANEE	5905-00-803-2904	RC07F23100	00300	RESISTOR, FIXED, COMPOSITION		EA	2

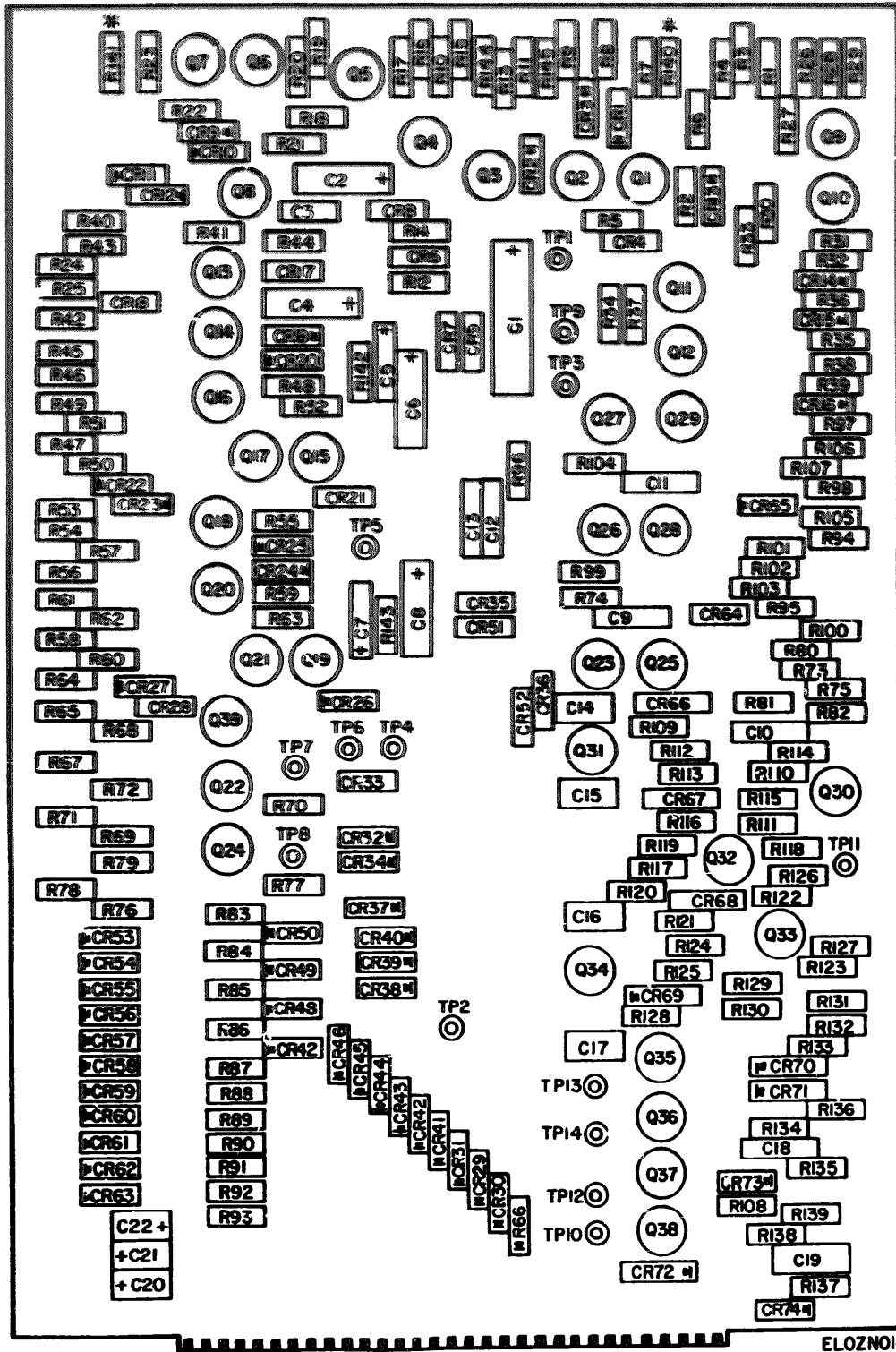


Figure 8. Alarm-Monitor Subassembly Alarm Control Module (1A15) (Sheet 1 of 3).

REF. DES.	ITEM NO.	REF. DES.	ITEM NO.	REF. DES.	ITEM NO.	REF. DES.	ITEM NO.	REF. DES.	ITEM NO.
C1	1	CR8	11	CR37	11	CR66	11	Q21	15
C2	2	CR9	11	CR38	11	CR67	11	Q22	15
C3	3	CR10	11	CR39	11	CR68	11	Q23	15
C4	2	CR11	11	CR40	11	CR69	11	Q24	15
C5	4	CR12	12	CR41	11	CR70	12	Q25	15
C6	2	CR13	11	CR42	11	CR71	12	Q26	15
C7	4	CR14	12	CR43	11	CR72	12	Q27	15
C8	2	CR15	12	CR44	11	CR73	12	Q28	15
C9	5	CR16	12	CR45	11	CR74	12	Q29	15
C10	5	CR17	11	CR46	11	Q1	13	Q30	16
C11	5	CR18	11	CR47	11	Q2	14	Q31	16
C12	6	CR19	12	CR48	11	Q3	15	Q32	13
C13	6	CR20	12	CR49	11	Q4	16	Q33	16
C14	7	CR21	11	CR50	11	Q5	16	Q34	16
C15	7	CR22	11	CR51	12	Q6	13	Q35	13
C16	8	CR23	12	CR52	12	Q7	14	Q36	13
C17	8	CR24	12	CR53	11	Q8	15	Q37	16
C18	5	CR25	11	CR54	11	Q9	16	Q38	16
C19	9	CR26	11	CR55	11	Q10	16	Q39	16
C20	4	CR27	11	CR56	11	Q11	13	R1	17
C21	4	CR28	12	CR57	11	Q12	16	R2	18
C22	10	CR29	11	CR58	11	Q13	13	R3	19
CR1	11	CR30	11	CR59	11	Q14	15	R4	20
CR2	11	CR31	11	CR60	11	Q15	14	R5	21
CR3	11	CR32	11	CR61	11	Q16	13	R6	22
CR4	12	CR33	11	CR62	11	Q17	15	R7	23
CR5	11	CR34	11	CR63	11	Q18	16	R8	24
CR6	11	CR35	12	CR64	11	Q19	14	R9	25
CR7	11	CR36	12	CR65	11	Q20	13	R10	26

ELOZNOIS

Figure 8. Alarm-Monitor Subassembly Alarm Control Module (1-A15) (Sheet 2 of 3).

REF. DES.	ITEM NO.	REF. DES.	ITEM NO.	REF. DES.	ITEM NO.	REF. DES.	ITEM NO.	REF. DES.	ITEM NO.
R31	27	R40	17	R69	39	R98	40	R27	48
R32	27	R41	18	R70	32	R99	23	R28	41
R33	27	R42	19	R71	22	R00	30	R29	44
R34	27	R43	35	R72	40	R01	31	R30	42
R35	28	R44	21	R73	32	R02	27	R31	48
R36	26	R45	24	R74	41	R03	18	R32	49
R37	26	R46	25	R75	30	R04	23	R33	17
R38	18	R47	36	R76	39	R05	30	R34	34
R39	19	R48	37	R77	32	R06	31	R35	20
R20	20	R49	19	R78	22	R07	27	R36	39
R21	21	R50	30	R79	40	R08	42	R37	39
R22	24	R51	35	R80	32	R09	41	R38	17
R23	29	R52	21	R81	41	R10	26	R39	32
R24	24	R53	24	R82	30	R11	26	R40	50
R25	25	R54	25	R83	32	R12	27	R41	50
R26	30	R55	34	R84	32	R13	27	R42	51
R27	23	R56	22	R85	32	R14	43	R43	51
R28	31	R57	25	R86	32	R15	43	R44	37
R29	18	R58	36	R87	32	R16	34	R45	37
R30	17	R59	37	R88	32	R17	44		
R31	24	R60	30	R89	32	R18	39		
R32	32	R61	19	R90	32	R19	45		
R33	25	R62	38	R91	32	R20	46		
R34	25	R63	21	R92	32	R21	34		
R35	31	R64	24	R93	32	R22	47		
R36	32	R65	25	R94	24	R23	47		
R37	17	R66	17	R95	40	R24	36		
R38	33	R67	24	R96	41	R25	36		
R39	34	R68	27	R97	33	R26	48		

ELOZNC16

Figure 8. Alarm-Monitor Subassembly Alarm Control Module (1A15) (Sheet 3 of 3).

NATIONAL STOCK NUMBER	QUANTITY	UNIT	DESCRIPTION	LEADERSHIP CODES	
				UNIT	UNIT
GROUP 0000 ALARM-REPEATER DISCREETLY ALARM					
CONTROL MESSAGE BELL					
5910-00-700-2875	0100000000	01000	CAPACITOR, FIXED, ELECTROLYTIC	EA	1
5910-00-700-2877	0100000000	01000	CAPACITOR, FIXED, ELECTROLYTIC	EA	4
5910-00-600-7004	0100000000	01000	CAPACITOR, FIXED, CERAMIC	EA	11
5910-00-400-9100	0100000000	01000	CAPACITOR, FIXED, ELECTROLYTIC	EA	4
5910-00-700-0222	0100000000	01000	CAPACITOR, FIXED, CERAMIC	EA	4
5910-00-900-0200	0100000000	01000	CAPACITOR, FIXED, CERAMIC	EA	2
5910-00-000-2000	0100000000	01000	CAPACITOR, FIXED, WCA	EA	2
5910-00-000-2100	0100000000	01000	CAPACITOR, FIXED, WCA	EA	2
5910-00-700-0100	0100000000	01000	CAPACITOR, FIXED, ELECTROLYTIC	EA	1
5910-00-700-0200	0100000000	01000	CAPACITOR, FIXED, ELECTROLYTIC	EA	1
5910-00-000-1000	01000	01000	SEMICONDUCTOR OPTIC, DIODE	EA	25
5910-00-000-0000	01000	01000	SEMICONDUCTOR OPTIC, DIODE	EA	10
5910-00-200-0000	01000	01000	TRANSISTOR	EA	9
5910-00-200-0000	01000	01000	TRANSISTOR	EA	4
5910-00-900-0000	01000	01000	TRANSISTOR	EA	5
5901-00-063-6300	01000	01000	TRANSISTOR	EA	21
5901-00-603-2464	01000	01000	RESISTOR, FIXED, COMPOSITION	EA	7
5905-00-482-822	01000	01000	RESISTOR, FIXED, COMPOSITION	EA	5
5905-00-601-093	01000	01000	RESISTOR, FIXED, COMPOSITION	EA	5
5905-00-686-3129	01000	01000	RESISTOR, FIXED, COMPOSITION	EA	3
5905-00-606-336	01000	01000	RESISTOR, FIXED, COMPOSITION	EA	5
5905-00-614-6832	01000	01000	RESISTOR, FIXED, COMPOSITION	EA	4
5905-00-687-6083	01000	01000	RESISTOR, FIXED, COMPOSITION	EA	4
5905-00-68-0131	01000	01000	RESISTOR, FIXED, COMPOSITION	EA	9
5905-00-641-6116	01000	01000	RESISTOR, FIXED, COMPOSITION	EA	8
5950-00-682-4184	01000	01000	RESISTOR, FIXED, COMPOSITION	EA	4
5905-00-721-9597	01000	01000	RESISTOR, FIXED, COMPOSITION	EA	9
5905-00-484-9989	01000	01000	RESISTOR, FIXED, COMPOSITION	EA	2
5905-0-481-8851	01000	01000	RESISTOR, FIXED, COMPOSITION	EA	1
5905-00-424-4189	01000	01000	RESISTOR, FIXED, COMPOSITION	EA	7
5905-00-684-999	01000	01000	RESISTOR, FIXED, COMPOSITION	EA	4
5905-00-686-3983	01000	01000	RESISTOR, FIXED, COMPOSITION	EA	10
5905-00-601-8939	01000	01000	RESISTOR, FIXED, COMPOSITION	EA	2
5905-00-683-2238	01000	01000	RESISTOR, FIXED, COMPOSITION	EA	5
5905-00-965-9114	01000	01000	RESISTOR, FIXED, FILM	EA	2
5905-00-831-6134	01000	01000	RESISTOR, FIXED, COMPOSITION	EA	4
5905-00-601-9949	01000	01000	RESISTOR, FIXED, COMPOSITION	EA	4
5905-00-680-0383	01000	01000	RESISTOR, FIXED, FILM	EA	1

SECTION II

TM 11-5815-310-34P

CLASSIFICATION			NATIONAL STOCK NUMBER	PART NUMBER	PART NUMBER	DESCRIPTION	ASSEMBLY CODE	QTY	UNIT
ORG. CODE	ITEM NO.	GROUP CODE							
8	38	REPAIR	5905-00-683-2246	REPAIR PART	81349	REPAIR, FIELD, COMPOSITE		EA	5
8	48	REPAIR	5905-00-683-0149	REPAIR PART	81349	REPAIR, FIELD, COMPOSITE		EA	4
8	42	REPAIR	5905-00-685-1083	REPAIR PART	81349	REPAIR, FIELD, COMPOSITE		EA	5
8	42	REPAIR	5905-00-646-9536	REPAIR PART	81349	REPAIR, FIELD, COMPOSITE		EA	2
8	43	REPAIR	5905-00-162-3862	REPAIR PART	81349	REPAIR, FIELD, COMPOSITE		EA	2
8	44	REPAIR	5905-00-012-4700	REPAIR PART	81349	REPAIR, FIELD, COMPOSITE		EA	2
8	45	REPAIR	5905-00-606-9864	REPAIR PART	81349	REPAIR, FIELD, COMPOSITE		EA	1
8	46	REPAIR	5905-00-783-2250	REPAIR PART	81349	REPAIR, FIELD, COMPOSITE		EA	1
8	47	REPAIR	5905-00-813-7704	REPAIR PART	81349	REPAIR, FIELD, COMPOSITE		EA	2
8	48	REPAIR	5905-00-100-3476	REPAIR PART	81349	REPAIR, FIELD, COMPOSITE		EA	3
8	49	REPAIR	5905-00-685-3806	REPAIR PART	81349	REPAIR, FIELD, COMPOSITE		EA	1
8	50	REPAIR	5905-00-618-1077	REPAIR PART	81349	REPAIR, FIELD, COMPOSITE, SELECT		EA	2
8	50	REPAIR	5905-00-682-4845	REPAIR PART	81349	REPAIR, FIELD, COMPOSITE, SELECT		EA	2
8	50	REPAIR	5905-00-486-3129	REPAIR PART	81349	REPAIR, FIELD, COMPOSITE, SELECT		EA	2
8	50	REPAIR	5905-00-683-2846	REPAIR PART	81349	REPAIR, FIELD, COMPOSITE, SELECT		EA	1
8	50	REPAIR	5905-00-631-3127	REPAIR PART	81349	REPAIR, FIELD, COMPOSITE, SELECT		EA	1
8	51	REPAIR	5905-00-193-4944	REPAIR PART	81349	REPAIR, FIELD, COMPOSITE		EA	2

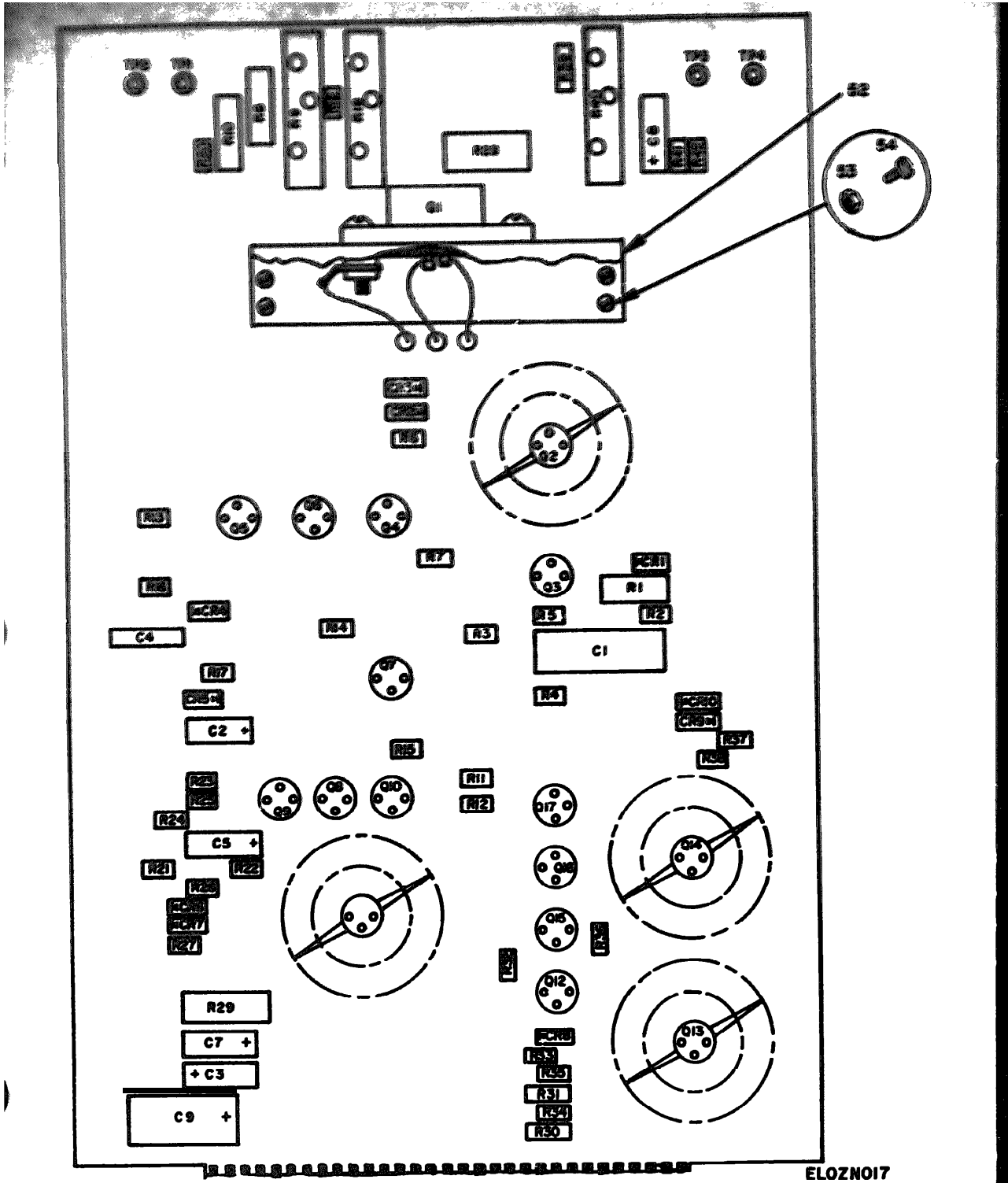


Figure 9. Power Supply Module (1A17) (Sheet 1 of 2).

ELOZNO17

REF DES.	ITEM NO.	REF DES.	ITEM NO.	REF DES.	ITEM NO.	REF DES.	ITEM NO.	REF DES.	ITEM NO.	REF DES.	ITEM NO.	REF DES.	ITEM NO.
C1	1	CR4	7	Q5	15	Q16	14	R10	28	R21	38	R32	42
C2	2	CR5	9	Q6	15	Q17	14	R11	29	R22	39	R33	37
C3	3	CR6	8	Q7	16	R1	19	R12	30	R23	31	R34	46
C4	4	CR7	10	Q8	14	R2	20	R13	31	R24	40	R35	46
C5	2	CR8	7	Q9	14	R3	21	R14	32	R25	41	R36	47
C7	5	CR9	11	Q10	17	R4	22	R15	33	R26	39	R37	31
C8	2	CR0	11	Q11	17	R5	23	R16	34	R27	42	R38	48
C9	6	Q1	12	Q12	18	R6	24	R17	35	R28	43	R39	49
CR1	7	Q2	13	Q13	17	R7	25	R18	20	R29	44	R40	50
CR2	8	Q3	14	Q14	17	R8	26	R19	36	R30	45	R41	32
CR3	8	Q4	14	Q15	18	R9	27	R20	37	R31	45	R42	51

ELOZNO18

Figure 9. Power Supply Module (1A17) (Sheet 2 of 2).

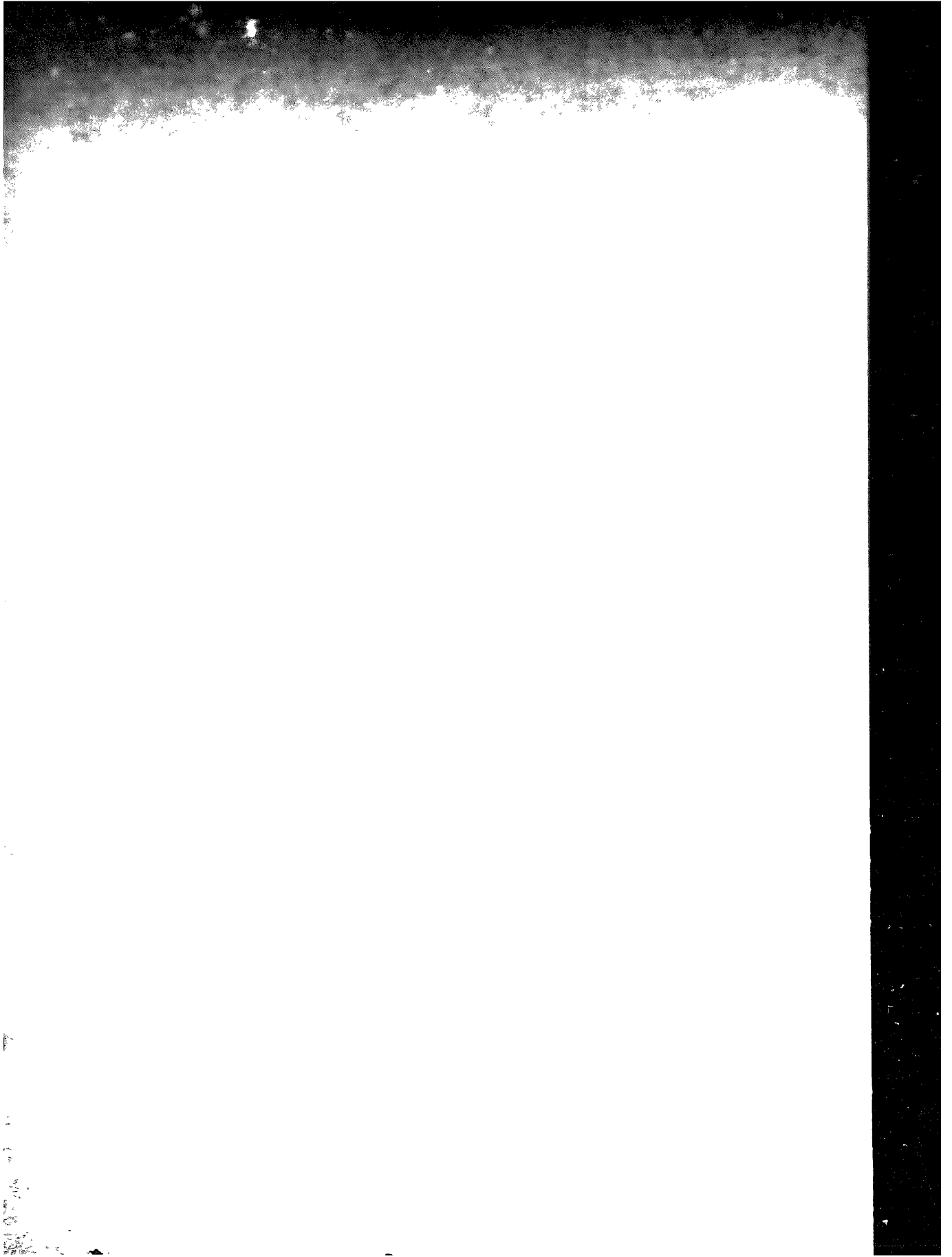


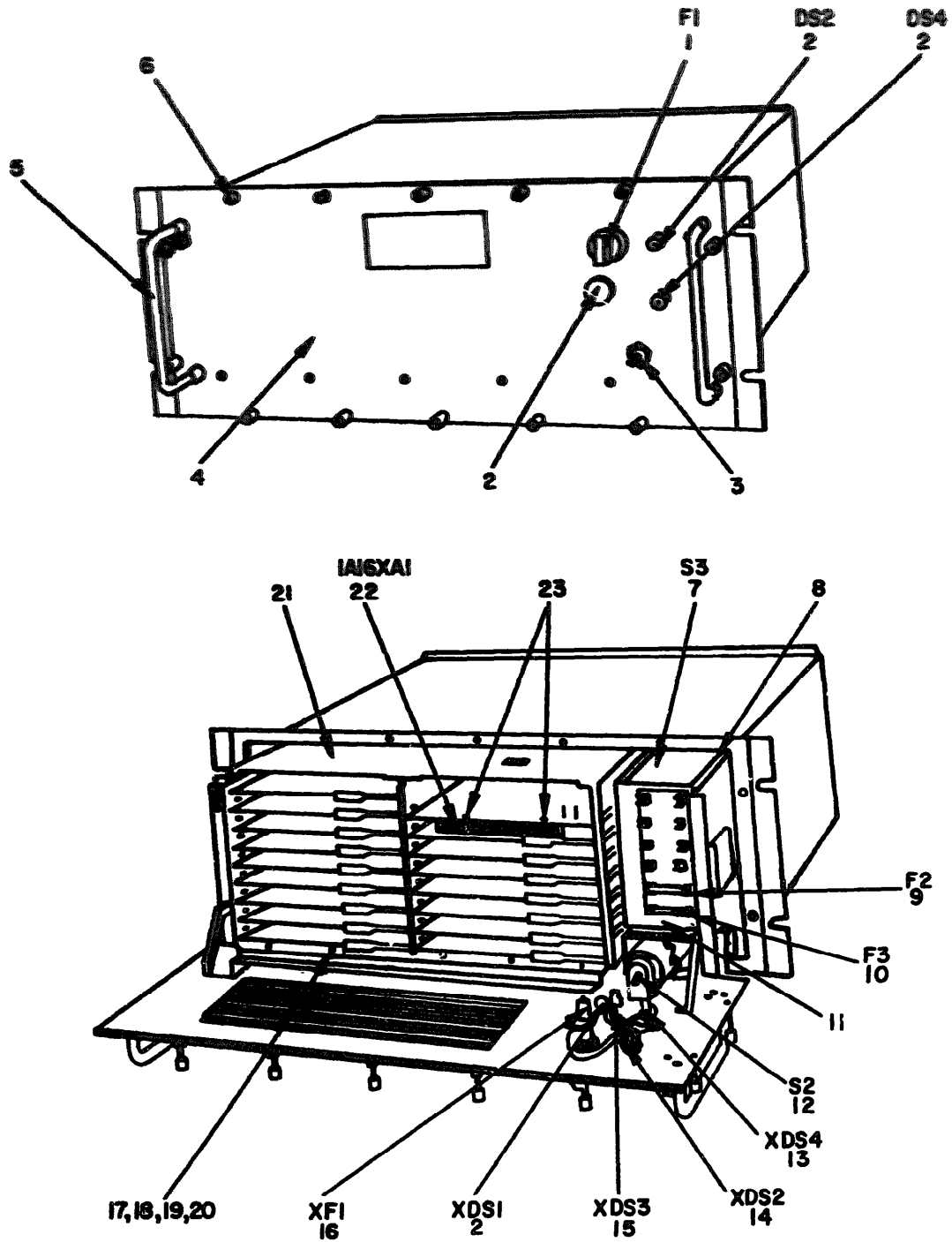
CLASSIFICATION		PART NUMBER	NATIONAL STOCK NUMBER	DESCRIPTION	USABLE ON COMB	QTY	UNIT
(13) FICL	(14) FICL						
9	1	5901-00-480-2382	CP58480204W	01340	CAPACITOR, FIXED, PAPER	EA	1
9	2	5901-00-940-4877	CS58480204W	01340	CAPACITOR, FIXED, ELECTROLYTIC	EA	2
9	3	5901-00-940-5044	CS58480204W	01340	CAPACITOR, FIXED, ELECTROLYTIC	EA	1
9	4	5901-00-116-6617	CS58480204W	01340	CAPACITOR, FIXED, CERAMIC	EA	1
9	5	5901-00-450-2889	CS58480204W	01340	CAPACITOR, FIXED, ELECTROLYTIC	EA	1
9	6	5901-00-900-2382	CS58480204W	01340	CAPACITOR, FIXED, ELECTROLYTIC	EA	0
9	7	5901-00-660-6036	2N2977	01340	SEMICONDUCTOR DEVICE, DIODE	EA	3
9	8	5901-00-750-6221	2N2984	01340	SEMICONDUCTOR DEVICE, DIODE	EA	3
9	9	5901-00-920-1940	2N2985	01340	SEMICONDUCTOR DEVICE, DIODE	EA	1
9	10	5901-00-687-6047	2N2985	01340	SEMICONDUCTOR DEVICE, DIODE	EA	1
9	11	5901-00-060-9044	2N2984	01340	SEMICONDUCTOR DEVICE, DIODE	EA	2
9	12	5901-00-621-6074	2N2974	01340	TRANSISTOR	EA	1
9	13	5901-00-903-7476	2N2985	01340	TRANSISTOR	EA	1
9	14	5901-00-930-1747	2N2987	01340	TRANSISTOR	EA	6
9	15	5901-00-226-8071	2N2980	01340	TRANSISTOR	EA	2
9	16	5901-00-192-5224	2N2980	01340	TRANSISTOR	EA	2
9	17	5901-00-013-4360	2N2613	01340	TRANSISTOR	EA	4
9	18	5901-0-224-8934	2N2222	01340	TRANSISTOR	EA	2
9	19	5905-00-764-5683	RC070R22	01340	RESISTOR, FIXED, WIRE WOUND	EA	1
9	20	5905-00-662-4107	RC070F181J	01340	RESISTOR, FIXED, COMPOSITION	EA	2
9	21	5905-00-607-0082	RC070F223J	01340	RESISTOR, FIXED, COMPOSITION	EA	1
9	22	5905-00-861-6986	RC070F421J	01340	RESISTOR, FIXED, COMPOSITION	EA	1
9	23	5905-00-682-7724	RC070F242J	01340	RESISTOR, FIXED, COMPOSITION	EA	1
9	24	5905-00-683-3710	RC070F180J	01340	RESISTOR, FIXED, COMPOSITION	EA	1
9	25	5905-00-664-9998	RC070F472J	01340	RESISTOR, FIXED, COMPOSITION	EA	1
9	26	5905-00-892-1477	RM5C4020F	01340	RESISTOR, FIXED, FILM	EA	1
9	27	5905-00-050-0084	RT11C2P500	01340	RESISTOR, VARIABLE	EA	1
9	28	5905-00-899-5824	RM5C2740F	01340	RESISTOR, FIXED, FILM	EA	1
9	29	5905-00-686-3838	RC070F273J	01340	RESISTOR, FIXED, COMPOSITION	EA	1
9	30	5905-00-81-8818	RC070F153J	01340	RESISTOR, FIXED, COMPOSITION	EA	1
9	31	5905-00-681-6462	RC070F102J	01340	RESISTOR, FIXED, COMPOSITION	EA	3
9	32	5905-00-727-8001	RC070F681J	01340	RESISTOR, FIXED, COMPOSITION	EA	2
9	33	5905-00-683-2238	RC070F103J	01340	RESISTOR, FIXED, COMPOSITION	EA	1
9	34	5905-00-805-9713	RC070F431J	01340	RESISTOR, FIXED, COMPOSITION	EA	1
9	35	5905-00-683-2234	RC070F391J	01340	RESISTOR, FIXED, COMPOSITION	EA	1
9	36	5905-00-079-3499	RT11C2P501	01340	RESISTOR, VARIABLE	EA	1
9	37	5905-00-683-7723	RC070F152J	01340	RESISTOR, FIXED, COMPOSITION	EA	2
9	38	5905-00-723-5231	RC070F222J	01340	RESISTOR, FIXED, COMPOSITION	EA	1

SECTION II

TM 11-5815-310-34P

QUANTITIES			NATIONAL STOCK NUMBER	PART NUMBER	PART NUMBER	DESCRIPTION	ASSEMBLY OR CONN	UNIT	QTY
REQ NO	REQ NO	REQ CODE							
9	20	XXXX	5905-00-479-5424	RESISTOR	81340	RESISTOR, FIXED, COMPOSITION		EA	2
9	40	XXXX	5905-00-683-2571	RESISTOR	81340	RESISTOR, FIXED, COMPOSITION		EA	1
9	40	XXXX	5905-00-683-3174	RESISTOR	81340	RESISTOR, FIXED, COMPOSITION		EA	1
9	40	XXXX	5905-00-343-2292	RESISTOR	81340	RESISTOR, FIXED, COMPOSITION		EA	2
9	40	XXXX	5905-00-279-3414	RESISTOR	81340	RESISTOR, FIXED, COMPOSITION		EA	1
9	40	XXXX	5905-00-379-2507	RESISTOR	81340	RESISTOR, FIXED, COMPOSITION		EA	1
9	40	XXXX	5905-00-785-8265	RESISTOR	81340	RESISTOR, FIXED, COMPOSITION		EA	2
9	40	XXXX	5905-00-132-6144	RESISTOR	81340	RESISTOR, FIXED, COMPOSITION		EA	2
9	40	XXXX	5905-00-684-3334	RESISTOR	81340	RESISTOR, FIXED, COMPOSITION		EA	1
9	40	XXXX	5905-00-684-0032	RESISTOR	81340	RESISTOR, FIXED, COMPOSITION		EA	1
9	40	XXXX	5905-00-642-1442	RESISTOR	81340	RESISTOR, FIXED, COMPOSITION		EA	1
9	50	XXXX	5905-00-182-4743	RESISTOR	81340	RESISTOR, VARIABLE		EA	1
9	50	XXXX	5905-00-624-9224	RESISTOR	81340	RESISTOR, FIXED, COMPOSITION		EA	1
9	50	XXXX	6200000	WASHER	96200	WASHER, AXLE		EA	1
9	50	XXXX	6700000	WASHER	96200	WASHER, AXLE		EA	2
9	50	XXXX	9800000-15	SCREW	98000	SCREW, MACHINE		EA	4



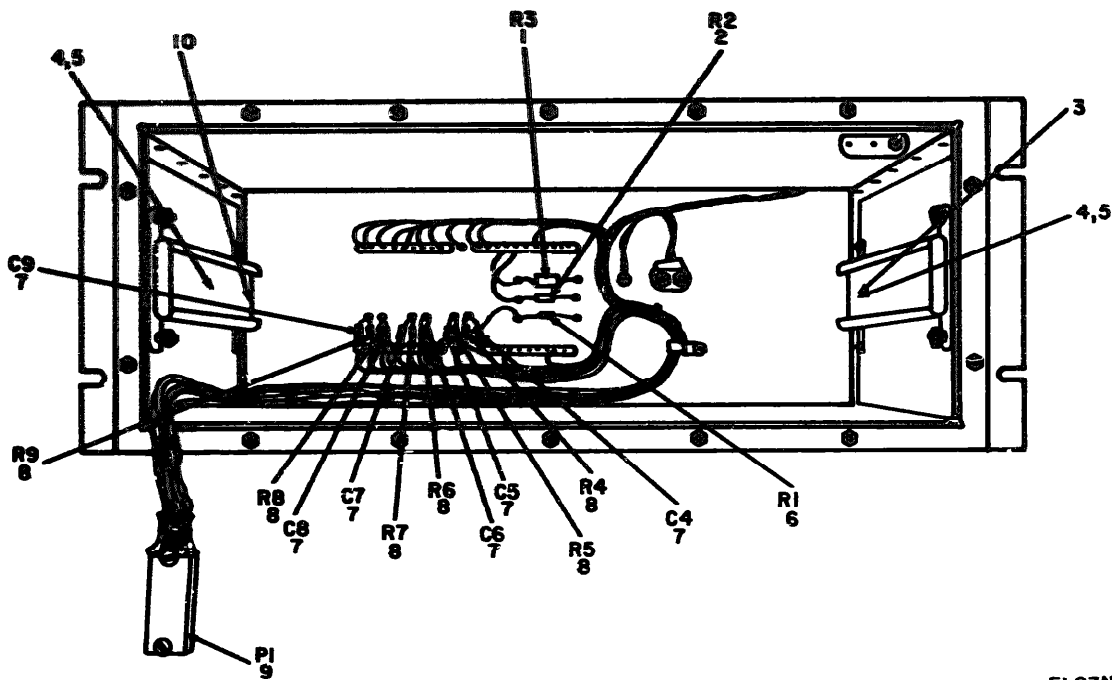


ELOZNOI9

Figure 10. Alarm-Monitor Chassis Electrical Assembly (1A16).

SECTION II

ILLUSTRATION		QTY	NATIONAL STOCK NUMBER	PART NUMBER	DESCRIPTION	UNABLE CDM CODE
(10) FIG NO	(11) VIEW NO					
<b>GROUP 0200 ALARM-MASTER CHASSIS</b>						
<b>ELECTRICAL ASSEMBLY 1000</b>						
10	1	PAF22	5920-00-200-9200	NS32500-1000	02300	FUSE,CARTRIDGE SELECT
10	2	PAF22	5920-00-200-2700	NS32500-00	02300	FUSE,CARTRIDGE SELECT
10	3	PAF22	6200-00-100-7000	NS32500-200	04000	LAMP,INCANDESCENT
10	4	PAF22	5920-00-100-0000	NS32500-700	04000	SWITCH,LOCK KEY
10	5	PAF22	5920-00-000-0000	NS32500-0000	06000	PANEL,FRONT
10	6	PAF22	5920-00-000-0000	NS32500-0	06000	HANDLE,KEY
10	7	PAF22	5920-00-000-0000	NS32500-0000	06000	SCREW,EXTERNALLY RELEASED
10	8	PAF22	5920-00-000-0000	NS32500-0	06000	SWITCH,INTERNAL
10	9	PAF22	5920-00-000-0000	NS32500-70	06000	WASHER,LOCK
10	10	PAF22	5920-00-000-0000	NS32500-00	02300	FUSE,CARTRIDGE
10	11	PAF22	5920-00-000-0000	NS32500-00	02300	FUSE,CARTRIDGE
10	12	PAF22	5920-00-000-0000	NS32500-0000	06000	FUSE BLOCK
10	13	PAF22	5430-00-463-1317	NS32500-20	06000	SWITCH,TOGGLE
10	14	PAF22	6310-00-408-9832	NS32500-0	06000	LIGHT,INDICATOR
10	15	PAF22	6210-00-824-9421	NS32500-0	06000	LIGHT,INDICATOR
10	16	PAF22	6210-00-68-0445	NS32500-2	06000	LIGHT,INDICATOR
10	17	PAF22	5920-00-121-6584	NS32500-0	02300	FUSE,CARTRIDGE
10	18	PAF22	5320-00-662-0912	NS32500-00	06000	PLT,PLAIN,HEXAGON
10	19	PAF22	5305-00-654-6652	NS32500-20	06000	SCREW,MACHINE
10	20	PAF22	5910-00-531-9614	NS32500-00	06000	WASHER,FLAT
10	21	PAF22	5105-00-071-1322	NS32500-00	06000	SCREW,MACHINE
10	22	PAF22	5935-00-498-5506	NS32500-00	06000	CARD CHASSIS
10	23	PAF22	5310-0-058-6667	NS32500-0	09700	CONDUCTOR,RECEPTACLE,ELECTRICAL
10	24	PAF22		NS32500-20	06000	SCREW,MACHINE



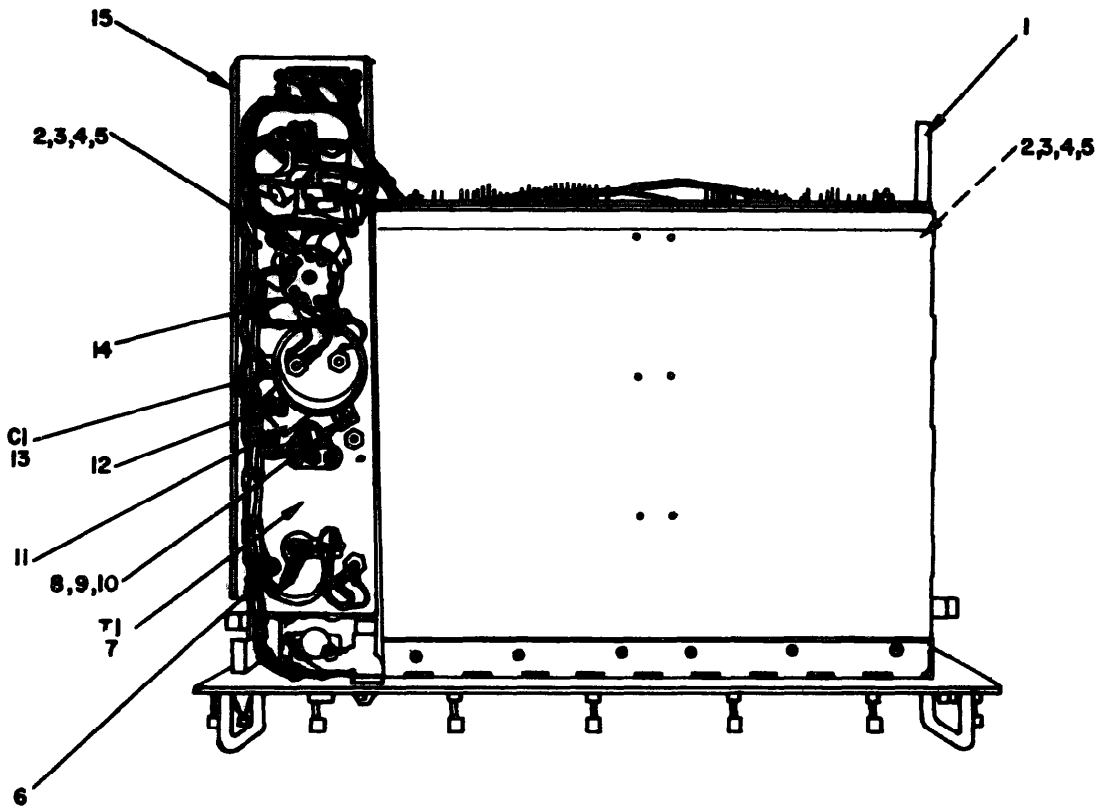
ELOZN020

Figure 11. Alarm-Monitor Chassis Electrical Assembly (1A16)  
Inside View Case.

SECTION II

TM 11-5815-310-34P

(9)		(10)	NATIONAL STOCK NUMBER	PART NUMBER	FCOM	DESCRIPTION	USALC CODE	UNIT	QUANTITY
QTY	REQ	QTY							
11	1	PAFZZ	5905-00-279-3529	RC420F680J	01349	RESISTOR, FIXED, COMPOSITION		EA	1
11	2	PAFZZ	5905-00-289-2636	RC320F701J	01349	RESISTOR, FIXED, COMPOSITION		EA	1
11	3	XDFZZ		6202012-001	96230	COVER STOP		EA	1
11	4	XDFZZ	5310-00-012-0912	NS35649-64	96904	NUT, PLAIN, HEXAGON		EA	6
11	5	XDFZZ	5310-00-143-1954	NS35337-79	96006	WASHER, LOCK		EA	6
11	6	PAFZZ	5905-00-190-0384	RC200F122J	01349	RESISTOR, FIXED, COMPOSITION		EA	1
11	7	PAFZZ	5910-00-993-8367	CK63A7103K	01349	CAPACITOR, FIXED, CERAMIC		EA	6
11	8	PAFZZ	5905-00-145-6846	RC200F102J	01349	RESISTOR, FIXED, COMPOSITION		EA	6
11	9	PAFZZ	5935-00-495-2519	60030299	96230	CONNECTOR, PLUG, ELECTRICAL		EA	1
11	10	XDFZZ		6202012-002	96230	COVER STOP		EA	1



ELOZNO2I

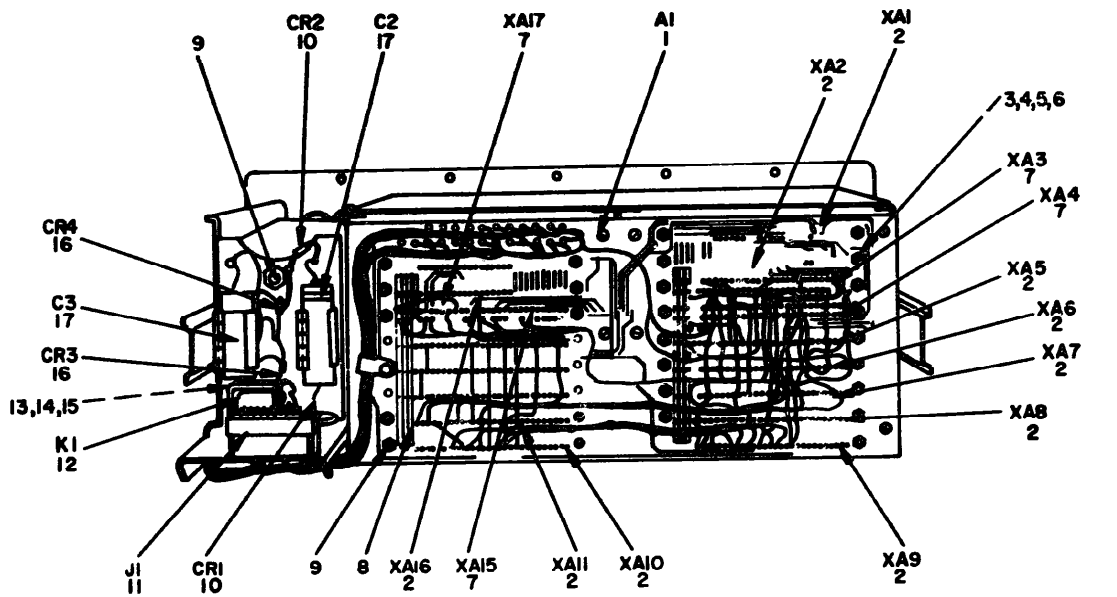
Figure 12. Alarm-Monitor Chassis Electrical Assembly (1A16)  
Bottom View Chassis.



SECTION II

TM 11-5815-310-34P

ILLUSTRATION			NATIONAL STOCK NUMBER	(6)	(7)	DESCRIPTION	USABLE CUN CODE	(9)	(10)
(1)	(2)	(3)		PART NUMBER	FORM			UNIT	QTY INC OR DEBT
1.2	1	NSFZZ	5310-00-906-3477	9603009-002	96230	SLICE, LEFT HAND		EA	1
1.2	2	NSFZZ	5310-00-427-5438	NS35650-104	96006	NUT, PLAIN, HEXAGON		EA	0
1.2	3	NSFZZ	5305-00-459-3654	NS51958-63	96006	SCREW, MACHINE		EA	0
1.2	4	NSFZZ	5310-00-147-6412	AN860C10L	08044	WASHER, FLAT		EA	12
1.2	5	NSFZZ	5310-00-058-2951	NS35337-81	96006	WASHER, LOCK		EA	0
1.2	6	NSFZZ	5310-00-208-9259	NS21044C3	96006	NUT, SELF LOCKING, HEXAGON		EA	4
1.2	7	PAFZZ	5950-00-129-2494	43000216	96230	TRANSFORMER, POWER		EA	1
1.2	8	NSFZZ	5310-00-942-6411	NS21044C06	96006	NUT, SELF LOCKING, HEXAGON		EA	3
1.2	9	NSFZZ	5305-00-054-6454	NS51957-30	96006	SCREW, MACHINE		EA	3
1.2	10	NSFZZ	5310-00-531-9514	AN860C6	08044	WASHER, FLAT		EA	3
1.2	11	NSFZZ	5910-00-827-9772	4506-20	96200	BRACKET, CAPACITOR MOUNTING		EA	1
1.2	12	NSFZZ	5305-00-719-5064	NS51959-30	96006	SCREW, MACHINE		EA	1
1.2	13	PAFZZ	5910-00-913-3063	CET1C002F	01349	CAPACITOR, FIXED, ELECTROLYTIC		EA	1
1.2	14	PAFZZ	5935-00-495-2521	40061025-003	96230	SOCKET, ELECTRON TUBE		EA	1
1.2	15	NSFZZ	5340-00-008-3676	9603009-001	96230	SLIDE, RIGHT HAND		EA	1



ELOZNO22

Figure 13. Alarm-Monitor Chassis Electrical Assembly (1A16)  
Rear View Chassis.

SECTION II

TM 11-5815-310-34P

LINE NO.	QUANTITY	UNIT	NATIONAL STOCK NUMBER	PART NUMBER	DESCRIPTION	FEDERAL CODE	
						CLASS	UNIT
13	1	EA	5535-00-469-8008	04220100	WIRESS BOARD	EA	1
13	2	EA	5135-00-762-5020	014275	CONNECTOR, RECEPTACLE, ELECTRICAL	EA	10
13	3	EA	5350-00-062-8912	NS33649-66	NUT, PLAIN, HEXAGON	EA	22
13	4	EA	5365-00-054-6434	NS51937-36	SCREW, MACHINE	EA	22
13	5	EA	5310-00-931-9314	AN96006	WASHER, FLAT	EA	22
13	6	EA	5310-00-043-1354	NS33337-79	WASHER, LOCK	EA	22
13	7	EA		67467-1	CONNECTOR, RECEPTACLE, ELECTRICAL	EA	4
13	8	EA	5950-00-831-4382	00200101	PRINTED CIRCUIT BOARD	EA	1
13	9	EA	5305-00-054-6652	NS51937-28	SCREW, MACHINE	EA	9
13	10	EA	5961-00-742-7610	1N614	SEMICONDUCTOR DEVICE, DIODE	EA	2
13	11	EA	5935-00-502-3126	34-2095	CONNECTOR, RECEPTACLE, ELECTRICAL	EA	1
13	12	EA	3120-00-571-6663	20120X	RELAY, SOLENOID	EA	1
13	13	EA	5310-00-167-1374	AN34023	NUT, PLAIN, HEXAGON	EA	1
13	14	EA	5310-00-189-4354	AN96003L	WASHER, FLAT	EA	2
13	15	EA	5310-00-209-4446	AN93503L	WASHER, LOCK	EA	1
13	16	EA	5940-00-087-6047	1N645	SEMICONDUCTOR DEVICE, DIODE	EA	2
13	17	EA	5910-00-943-0336	CE13C351F	CAPACITOR, FIXED, ELECTROLYTIC	EA	2

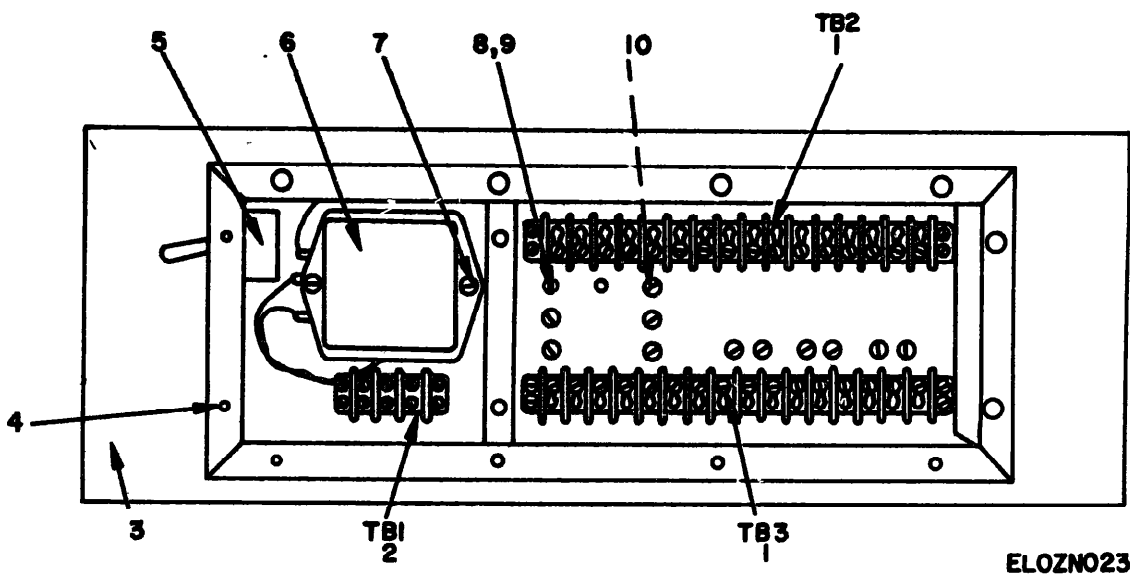
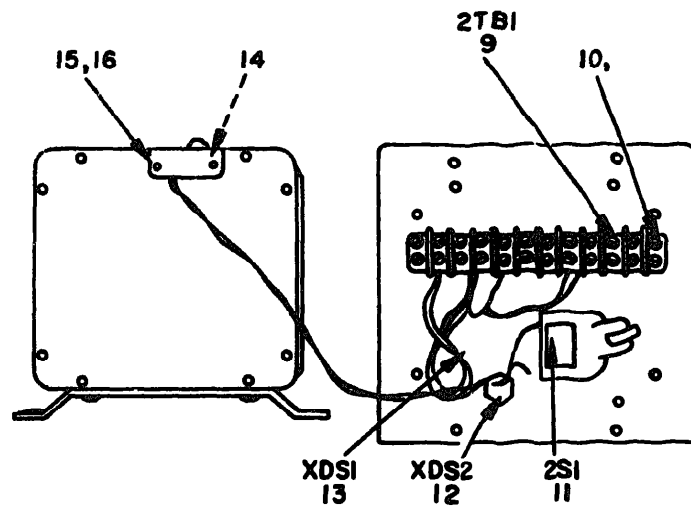
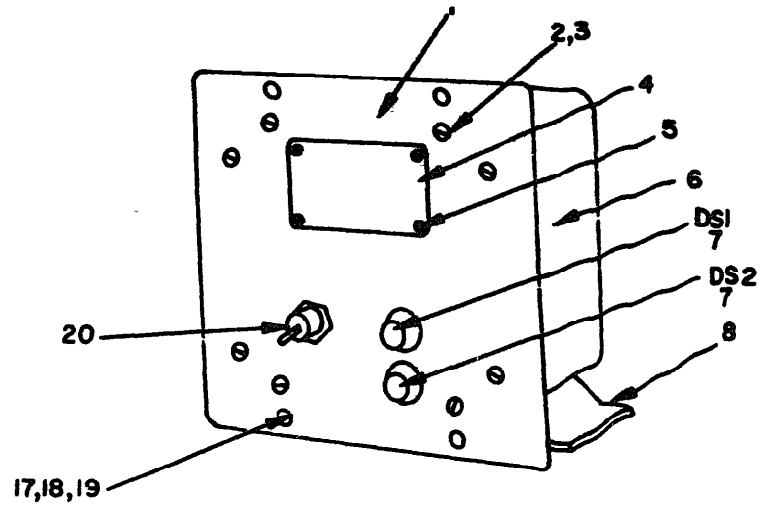


Figure 14. Alarm-Monitor Chassis Electrical Assembly (1A16)  
Rear View Panel.

SECTION II

TM 11-5815-310-34P

QUANTITY		UNIT	NATIONAL STOCK NUMBER	PART NUMBER	PCSN	DESCRIPTION	USABLE ON CODE	QTY	UNIT
(1)	(2)								
16	1	PAFZZ	5840-0-983-6076	407816	01340	TERMINAL BOARD		EA	2
16	2	PAFZZ	5940-00-983-6044	37783	01340	TERMINAL BOARD		EA	1
16	3	ASFZZ		0002	96230	PANEL, REAR		EA	1
16	4	ASFZZ	5385-00-054-6654	NS51957-26	96906	SCREW, MACHINE		EA	10
16	5	PAFZZ	5930-00-429-3743	NS29100-22	96906	SWITCH, TOGGLE		EA	1
16	6	PAFZZ	5919-00-134-0719	43020109	96230	FILTER, RADIO INTERFERENCE		EA	1
16	7	ASFZZ	5305-00-454-6452	NS51957-28	96906	SCREW, MACHINE		EA	2
16	8	ASFZZ	5310-00-062-0912	NS35649-64	96906	NUT, PLAIN, HEXAGON		EA	24
16	9	ASFZZ	5305-00-054-4455	NS51957-31	96906	SCREW, MACHINE		EA	12
16	10	PAFZZ	5940-00-199-7444	55025074-003	96230	TERMINAL, FEEDTHRU, INSULATED		EA	12



ELOZN024

Figure 15. Control, Alarm-Monitor Unit C-4007/FGA-10.

SECTION II

TM 11-5815-310-34P

(1)		(2)	(3)	(4)	(5)	(6)	(7)	(8)
ASSIGNMENT		NATIONAL STOCK NUMBER	PART NUMBER	FORM	DESCRIPTION	USABLE ON CODE	QTY	UNIT
QTY	UNIT							
<b>GROUP 02 CONTROL, ALARM-MONITOR UNIT</b>								
<b>C-1007/PGA-10</b>								
15	1	XDFEZ	4730-00-719-2955	0006	96238	PANEL, FRONT	EA	1
15	2	XDFEZ	5305-00-054-6652	MS1997-28	96906	SCREW, MACHINE	EA	8
15	3	XDFEZ	5310-00-632-5457	AW9606L	88044	WASHER, FLAT	EA	16
15	4	XDFEZ	2805-00-730-6710	970289	96238	PLATE, IDENTIFICATION	EA	1
15	5	XDFEZ	5305-00-054-5644	MS1997-11	96906	SCREW, MACHINE	EA	8
15	6	XDFEZ		0005	96238	CASE	EA	1
15	7	PAGEZ	6240-00-155-7036	MS25237-327	96906	LAMP, INCANDESCENT	EA	2
15	8	XDFEZ	1015-00-620-2083	63020830	96238	BRACKET	EA	1
15	9	PAPFE	5940-00-983-6051	0008	96238	TERMINAL BOARD	EA	1
15	10	XDFEZ	6310-00-062-0912	MS39649-64	96906	NUT, FLAIN, HEXAGON	EA	4
15	11	PAPFE	5930-00-655-1517	MS39098-26	96906	SWITCH, TOGGLE	EA	1
15	12	PAPFE	6210-00-806-8843	MS25296-2	96906	LIGHT, INDICATOR	EA	1
15	13	PAPFE	6210-00-682-9833	MS25296-6	96906	LIGHT, INDICATOR	EA	2
15	14	PAPFE	5930-00-519-8144	MS16106-1	96906	SWITCH, INTERLOCK	EA	1
15	15	XDFEZ	5305-00-054-6650	MS197-26	96906	SCREW, MACHINE	EA	2
15	16	XDFEZ	5310-00-271-4645	MS39649-84	96906	NUT, FLAIN, HEXAGON	EA	4
15	17	XDFEZ	5305-00-054-6668	MS1997-43	96906	SCREW, MACHINE	EA	4
15	18	XDFEZ	5310-00-558-6207	AW9606L	88044	WASHER, FLAT	EA	4
15	19	XDFEZ	5310-00-054-1830	MS39338-80	96906	WASHER, LOCK	EA	4
15	20	PAPFE	5930-00-199-8552	80600-743	04009	SWITCH, LOCK KEY	EA	1

SECTION IV

NATIONAL STOCK NUMBER AND PART NUMBER INDEX

TM 11-5815-310-34P

INDEX: LATEST NATIONAL STOCK NUMBER AND PART NUMBER ASSIGNMENT ARE INDICATED AT END OF INDEX

STOCK NUMBER	FIGURE NO.	ITEM NO.	STOCK NUMBER	FIGURE NO.	ITEM NO.
5310-00-547-1754			5903-00-481-8911	3	
5310-00-043-1754		8	5905-00-681-6618		22
5310-00-043-1754	13		5905-00-481-8818	5	8
5905-00-059-6034		27	5905-00-681-66618	6	
5305-00-054-5644	9	6	5905-00-481-8818		25
5305-00-054-5644	15		5905-00-681-8818	9	30
5905-00-054-6650	2	13	5905-00-681-8819	4	
5305-00-054-6450			5905-00-681-8821		34
5905-00-054-6650	15	15	5905-00-681-8822	3	
5305-00-054-4452		18	5905-00-681-8822		32
5305-00-054-6452	10	9	5905-00-681-8822	6	
5305-00-054-6652			5905-00-681-8822		43
5305-00-054-6652	15	2	5905-00-681-8823	5	
5305-00-054-6654			5905-00-681-8853		33
5305-00-054-6655	14	9	5905-00-681-8853	4	
5305-00-054-6658			5905-681-8853		12
5305-00-054-6668	15	17	5905-00-681-8853	3	
5305-00-059-3659			5905-00-681-8853	6	11
5305-00-071-1322	10	20	5905-00-681-8853		
5905-00-079-3499		56	5905-00-681-8853	8	29
5901-00-087-6047	9		5905-00-681-8854	3	34
5961-00-087-6047	13	16	5905-00-681-8854		
5910-00-088-1146	8		<b>5905-00-681-8855</b>	3	21
5815-00-111-2785			<b>5905-00-681-8855</b>		9
5815-00-111-2786	2	9	5905-00-681-8855	7	
5815-00-111-2787			<b>5905-00-681-8855</b>		22
5815-00-111-2788	2	7	<b>5905-00-681-8955</b>	8	33
5815-00-11-2789		4			
5815-00-111-2790	2	3	<b>5905-00-681-8957</b>	3	29
5815-00-111-2792	2		5905-00-681-8957		
5905-00-111-6106	3	27	5905-00-681-8957	8	50
5905-00-125-2490			5905-00-681-9969		
5915-00-134-0715	14	6	5905-00-682-4098	3	45
6240-00-155-7836				8	
6240-00-155-7836	12	7	5905-00-682-4100		2
5310-00-167-0812		4	5905-00-682-4101	4	
5310-167-1274			5905-00-682-4101		13
5310-00-183-4354	13	14	5905-00-682-4103	5	36
5905-00-190-8880			5905-00-682-4105	3	
5905-00-195-6806	11	8	5905-00-682-4105	4	37
5940-00-199-7446	14		5905-00-682-4105	8	
5930-00-199-9552		3	5905-00-682-4105		30
5930-00-199-9552	15	20	5905-00-682-4105	9	
5310-00-208-9255	12	6	5905-00-482-4107		20
5961-00-226-8579		7	6210-00-682-9833	10	13
5961-00-226-8579	8		6210-00-622-9833	15	
5961-00-226-8579	9		5905-00-683-2236	9	35
5961-000-226-8584	3	15	5905-00-683-2238	3	43
5961-00-226-8584	4	9	5905-00-683-2238	4	12
5961-00-226-8584	6		5905-00-683-2238		
5961-00-226-8584	8	13	5905-00-683-2283	8	34
5961-00-226-8584			5905-00-683-2298		33
5905-00-228-5813	3	24	5905-00-683-2239	9	40
5905-00-279-3416		43	5905-00-683-2242	9	
5905-00-279-3523	11	1	5905-00-683-2246	4	22
5920-00-295-9269			5905-00-683-2246		15
5920-00-296-0451	11	10		5	
5905-00-299-2054			5905-00-683-2246	6	
5905-00-473-5435		39	5905-00-685-2846	7	10
5905-00-486-7060	3	41	5905-00-683-2246		
5920-00-518-1790	10	7	5905-00-683-2246	8	50
5980-00-519-8144					
5930-00-518-8144	10	19	5905-00-683-7723	3	35
5310-00-531-9514	10	10	5905-00-683-7724	8	47
5310-00-531-9514			5905-00-683-7724		
5310-00-531-9514	13		5905-00-683-7726	3	39
5310-00-558-6207	15	18	5905-00-683-7726	4	28
5310-00-638-9857	15	3	5905-00-683-7726	6	
					22
5910-00-455-1517		12	5905-00-683-7726		42
5930-00-655-1517			5905-00-684-3128	7	
5961-00-668-6884		10	5905-00-684-3129	7	1 2
5961-00-669-6884			5905-00-686-3129		
5941-00-649-6884	4	4	5905-00-686-3129		20
5941-00-669-6884			5905-00-686-3129		
5941-00-669-6884	4		5905-00-686-3131		
5941-00-668-6884	12		5905-00-686-3131		
591-00-669-6884	7		5905-00-686-3131		
5905-00-681-6462			5905-00-686-3131		
5905-00-461-8017		3	5905-686-3131		



SECTION IV

NATIONAL STOCK NUMBER AND PART NUMBER INDEX

TM 11-5815-310-34P

STOCK NUMBER	FIGURE NO.	ITEM NO.	STOCK NUMBER	FIGURE NO.	ITEM NO.
5901-00-418-3131	7	12	5910-00-177-6617	5	
5905-00-686-2156	4	14	5910-00-177-4807	6	2
3505-00-135-3336	8	40	5910-00-177-6897	8	12
5905-00-686-3398	3	31	5910-00-187-2169	4	
5905-00-431-3358	6	8	5910-00-187-2187	8	9
5905-00-686-3138	9	47	5905-00-804-0179	3	30
5905-00-135-3368	3	20	5905-00-88-0179	4	
5905-00-686-3368	4	26	5905-00-800-0179	8	7
5905-00-686-3364	6	14	5905-00-800-3478	8	
5905-00-468-3368	8	41	5905-00-801-6998	9	22
5905-00-468-3369	8	21	5905-00-803-2908	3	28
5905-00-468-3078	9	41	5905-00-243-2988	7	
5905-00-468-3838	4	29	5905-00-883-2908	8	17
5905-00-684-3838	7	7	5905-00-305-9713	9	94
5905-00-486-3838	9	29	6210-00-804-8545	9	15
5905-00-486-3938	3	32	6210-00-806-8045	10	12
5905-00-686-3938	5	12	6210-00-026-9421	15	14
5905-00-686-3938	5	17	5905-00-803-0059	10	6
5905-00-686-3938	6	14	5941-00-813-9360	7	
5905-00-686-3903	-	-	5941-00-813-9360	3	17
5905-00-686-3903	7	11	5961-00-821-8976	9	
5905-00-686-9993	4	38	5910-00-827-9778	12	11
5905-00-686-9993	4	24	5930-00-829-3748	14	
5905-00-686-9993	8	31	5910-00-837-2977	7	2
5905-00-686-9994	8	45	5910-00-838-9421	3	3
5905-00-686-9995	4	35	5910-00-838-9421	5	5
5905-00-684-9995	7	15	5340-00-840-0954	9	49
5905-00-484-9995	8	28	5961-00-842-6937	3	12
5905-00-684-9995	8	28	5961-00-843-6937	4	8
5905-00-686-9996	3	51	5961-00-842-6937	5	6
5905-00-686-9997	3		5961-00-842-6937	6	6
5905-00-684-9998	9	42	5961-00-842-6937	7	
5905-00-686-9998	3	17	5961-00-842-4937	8	16
5905-00-687-0000	4	17	5961-00-842-9864	3	11
5905-00-687-0800	6		5961-00-842-9864	4	
5905-00-687-8000	6		5961-00-842-9864	5	5
5905-00-687-0080	7	13	5961-00-842-9864	6	
5905-00-687-0000	3	18	5961-00-842-9864	7	3
5905-00-687-0002	3		5961-00-842-9864	8	11
5905-00-687-0002	1	10	5961-00-842-9864	9	
5905-00-687-0002	6	15	5925-00-886-9383	8	38
5905-00-687-0002	7	16	5961-00-880-5430	3	7
5905-00-687-0002	9	23	5961-00-880-5430	4	5
5905-00-688-2022	9	21	5961-00-880-5430	5	
5905-00-688-3738	9	1	5961-00-880-5430	6	2
5905-00-688-1086	10	24	5910-00-880-5430	8	4
5905-00-691-8195	3	9	5920-00-880-6584	10	
5905-00-691-8195	9	44	5905-00-892-1477	9	26
5905-00-702-9743	9	48	5905-00-892-6944	8	51
5305-00-719-5864	12	50	5905-00-892-6944	9	46
5905-00-721-0597	3	12	5919-00-892-334	3	
5905-00-721-0597	4	18	5919-00-892-7334	8	3
5905-00-721-0597	4	23	5995-00-892-5824	9	28
5905-00-721-0597	5	9	5910-00-904-9644	9	
5905-00-721-0597	6	19	5905-00-912-6472	4	18
5905-00-721-0597	7	18	5910-00-913-3063	12	13
5905-00-721-0587	7	27	5960-00-923-3940	9	
5905-00-723-5251	8	44	5903-00-941-4710	3	24
5905-00-723-5251	8	38	5910-00-945-0313	8	
5905-00-726-3807	4	33	5990-00-965-7452	3	26
5905-00-726-5513	3	40	5905-00-197-3462	3	19
5905-00-726-4413	3	13	5310-00-982-6813	4	
5905-00-726-4413	6	17	5940-00-983-6044	12	2
5905-00-726-4413	7	23	5940-00-983-6076	14	9
5905-00-727-0001	9	32		15	2
5905-00-752-5229	9	16	5905-00-985-5872	14	11
5901-00-752-6121	9	8	3306-00-987-0119	5	6
5905-00-764-2403	9	19	5815-00-989-7315	10	2
5905-00-777-6897	3	8	5815-00-999-7316	1	1

PART NUMBER  
**AN96C3**  
**AN96C3L**  
**AN96C1L**  
**AN96C1**  
**AN96C1L**

FIG. NO. ITEM NO.  
**88044 13 15**  
**88044 13 4**  
**88044 13 19**

PART NUMBER  
**AN96C6**  
**AN96C6**  
**AN96C6L**  
**AN96C6L**

FSCN FIG. NO. ITEM NO.  
**88044 12 10**  
**88044 13 5**  
**88044 15 3**  
**88044 15 19**

SECTION IV

NATIONAL STOCK NUMBER AND PART NUMBER INDEX

TM 11-5815-310-34P

PART NUMBER	FSCH	FIG. NO.	ITEM NO.	PART NUMBER	FSCH	FIG. NO.	ITEM NO.
CE13C51F	81349		17	RSS1957-29	96906	10	16
CE71C682F	81349	1 2	1 3	235193-28	96906	i t	9
CX13AX222M	81349	8	9	ICS3193-28	96906		
	11349	8	9	RSS1957-28	96906	i s	9†
CK14AX103N		3	2	MS1937-30	96906		
CK60AW102N	81349			RS31957-31	96906	i f	9
CK60AW152N		7	3	RS1957-34	96906		
CK61AW222N	81349	3		RS33957-43	96906	; i	2 B
CK61AW222N	81349			MS51958-63	96906		
CK63AY103X	81349	11	7	N35196-65	96906		
C165CC25OJP3	81349			RR39FGA1O	80058		
CL65CD101JP3	81349	8	1	P14275	09769	1;	f
CM05C221K03	81349	3	1	RC07GF101J	81349	8	51
CH05F221J00	81349	3	1	RC07GF101J	81349	9	4 6
CM05F221J03	81349	4	1	RC07GF102J	81349		
CM05F221J03	81349	7		RC07GF103J	88149	z	3143
CM05F221J03	81349	7		RCO76F103J	81349		
CM05F331J03	81349	8	8	RCO76F103J	81349	4	:20
CM05F391J03	81349			RCO76F103J	81349	8	
CM05F391J03	81349			RCO76F103J	81349	9	33
CM07F203603	81349	4	2	RC07GF101J	81349	4	27
CH15D431JN3	81349	3	6	RC07GF1043	81349		
CP05A1KD104K3	81349			RCO76F104J	81349	:	12 9
CQ09A1M334K3	81349	9	3	RCO76F1043	81349		
CS136BC336M	81349			RCO76FO1J	81349	8'	go'
CS138BC475K	81349	9	8	RCO76F10SJ	81349	8	50
CS13BC475K	81349	5	2	RCO76GF113J	81349		
CS13BC475K	81349			RCO7F122J	81349	x	:3
CS13BC475K	81349			RCO7GF123J	81349	i	40
CS138C475K	61349	6	10	RCO7GF123J	81349		
CS1380226M	81349	9	3	RCO7GF123J	81349	f	23†
CS133BE156R	81349			RCO7GF123J	81349		
CS13BE225K	81349			RCO7GF1243	81349	t	38
CS138E225K	81349	4	5	RCO7GF124J	81349		
CS133EU5K	81349			RCO7GF124J	81349	8	f :
CS13BE225K	81349	6	2	RCO76F152J	81349		
CS10IE225K	81349	8	4	RCO7GF153J	81349	3	i2'
CS1MF10SK	81349	4	4	RCO7GF153J	81349		
CS13BF10SK	81349	8	9	RCO7GF153J	81349	z	30 6
CS13BF1tbK	81349	9	6	RCO76F153J	81349		
C4007F6AIO	81358			RCO76F153J	81349	t	f :
FM.1762	31349	10	16	RCO1GF153J	81349		
FO2A2SOVI-8A	81349	10	10	RCO76F154J	81349	:	30 3
FO2AZSOVB-8A	81349	10		RCO76F1S4J	81349	4	35
FO362SOV3-AbAS	81349	10	9	RCO76F1S4J	81349		12
FO332SOV3-4A	81349			RCO76F154J	81349		
RS1bIOb-1	96906			RCO76F1S4J	81349	8	: i
RS1bIOb-1	96906	10	14	RCO7GF181J	81349		
ns21044Cob	96906	12		RCO76F181J	81349	9	z't
	96906	12	6	RCO76F183J	81349	3	
MS 21044C3	96906			RCO76F183J	81349	4	LT
HS25237-327	96906	10	2	RCO76F183J	81349	6	18
KS25237-327	96906	15	7	RCO76F183J	81349	T	13
IKS2525b2	96906			RCO76F1833	81349		
IRS2525b	96906	15	12	RCO76F1BU	81349	4	K
RS252bb4	96906	10	14	RCO76F201J	81349	9	40
MS252sb-6	96906			RCO76F202J	81349		
KS2325b6	96906	15	13	RCO76F203J	81349	i	r't
HS33059-26	96906			RCO76F203J	81349	4	26
IIS3305+26	96906	15	11	RCO76F203J	81349	b	1b
RS3527C2 9	96906			RCO76F203J	81349	8	4 1
m3s337-79	96906	10	8	RCO76F204J	81349	4	34
RS35337-79	96906			RCO76FUZJ	81349		
IIS35337-79	96906	11	6	RCO76FZZJ	81349	9'	46 38
RS35337-8 1	96906	12		RCO76F223J	81349	9	1 b
	96906	15	17	WO76F223J	81349	4	10
	96906			RCO76F223J	81349	s'	19
E E E	96906			RCO76F223J	81349	bl349	
RS35b4964	96906	11		RCOtO22J	81349		: t
NS35649-64		13	3	RCO76F22S1J	81349	9	21
NS35649-64	96906	15	8	Rco76m24	81340	5	12
NS35649-64	96906			RCO76FLt4d		3	
NS35649-64	96906			TCF224J	81349	4	19
NS35650-104	96906	12	2	RCO76F224J	81349	8	30
NS39087-4	96906	10	5	RCO76F224J	81349	8	50
NS31957-11	96906	15	6	RCO76F242J	81349	3	35
NS31957-11				RCO76F242J		8	
NS31957-26	96906	2	13	Z.076FKki	81349	9	23
NS31957-26	96906			RCO76F24sJ	81349	3	18
NS31957-26	96906	15	15	M.076F2wJ	81349	4	25

SECTION IV

NATIONAL STOCK NUMBER AND PART NUMBER INDEX

TM 11-5815-310-34P

PART NUMBER	FSCN	FIG. NO.	ITEM NO.	PART NUMBER	FSCH	FIG. NO.	ITEM NO.
RC07GF243J	81349	5	9		41349	4	23
RC07GF243J	81349	6	19	RC07GF752J	81349		
RC07GF243J	81349	7	18	RC07GF753J	81349	5	13
RC07GF243J	81349	8	27		81349	9	
RC07GF272J	81349	9	39	RC07GF822J	81349		
RC07GF273J	81349	4	29		81349	4	36
RC07GF273J	81349			RC07GF822J	81349	4	14
RC07GF273J	81349	7	1	RC07GF623J	81349		
RC07GF274J	81349	4	32		81349	8	33
RC07GF274J	81349			RC07GF102J	81349	11	8
RC07GF274J	81349	6			81349	9	49
RC07GF274J	81349		43	RC20GF12J	81349	9	45
RC07GF303J	81349	3		RC20GF3R9J	81349	11	2
RC07GF303J	81349		24	RC32GF201J	81349		
RC07GF303J	81349	8		RC32GF431J	81349	9	43
RC07GF304J	81349	3	34	RC42GF330J	81349	11	1
RC07GF304J	81349				81349	3	42
RC07GF331J	81349	8	21	RC07GF113J	81349	4	20
RC07GF332J	81349			RN55C1182F	81349		
RC07GF333J	81349	3	32	RN55C1403F	81349		
RC07GF333J	81349			RN3C2432F	81349	5	11
RC07GF333J	81349	5	17	RN55CS622F	81349	8	35
RC07GF333J	81349	6		RN5304222F	81349		
RC07GF333J	81349	7	11	RM5D692F	81349	3	23
RC07GF333J	81349	3	32	RN55E1002F	81349	3	27
RC07GF333J	81349			RNS3E2262F	81349	3	41
RC07GF334J	81349	4	21	CU53E4442F	81349	3	24
RC07GF334J	81349			RN55E7152F	81349		
RC07GF334J	81349	6	13	RN55E8761F	81349	9	28
RC07GF334J	81349				81349	9	26
RC07GF363J	81349	3	39	RN65C402W	81349		
RC07GF363J	81349	4	28	RT11C2Q201	81349		
RC07GF363J	81349	7	12	RT11C2Q500	81349		
RC07GF363J	81349			RT11C2Q501	81349	9	27
RC07GF364J	81349	8	33	RW0VR22	81349		
RC07GF391J	81349		35	0000		9	11
RC07GF392J	81349	3	45	0001	96238		
RC07GF393J	81349	3	31	0002		14	3
RC07GF393J	81349	6	8	0004	96238	2	12
RC07GF393J	81349	9	47	0005			
RC07GF394J	81349	3	21	0006	96238	15	6
RC07GF394J	81349	6	9	0008	96238		
RC07GF394J	81349			IN1614	81349	15	10
RC07GF394J	81349	8	22	IN277	81349	3	10
RC07GF431J	81349	9	34	IN277	81349	4	7
RC07GF432J	81349	7	44	IN277	81349	4	4
RC07GF433J	81349			IN277	81349	6	4
RC07GF433J	81349	8	18	IN277	81349		
RC07GF471J	81349	9	42	IN277	81349	7	12
RC07GF472J	an49	8	42	IN277	81349	9	7
RC07GF472J	81349			IN64S	81349		
RC07GF473J	81349	4	22	IN64S	81349	13	16
RC07GF473J	81349	5	12	IN753A	81349	9	8
RC07GF473J	81349			IN82S	81349		
RC07GF473J	81349	5	22	IN914	81349	3	11
RC07GF473J	81349			IN914	81349	4	6
RC07GF473J	81349	7	39	IN914	81349	5	5
RC07GF473J	81349	8		IN914	81349	6	3
RC07GF474J	81349	3	38	IN914	81349	8	
RC07GF474J	81349			IN914	81349		
WO7GF474J	81349	8	50	IN914	81349	9	11
RC07GF313J	81349	4	36	2N1613	81349	3	13
RC07GF513J	81349	7	8	2N1613	81349		
RC07GF362J	81349	3	46	2N2222	81349	9	15
RC07GF562J	81349			2N2222	81349	6	9
RC67GF363J	81349	0	30	2N2222	81349		
RC07GF363J	81349	6	10	2N2222	81349	8	13
RC07GH63J	81349			2N2222	81349		
RC07GF621J	81349	8	22	2N2905	81349	9	13
RC07GF622J	81349	8		2N2907	81349	8	14
RC07GF681J	81349			2N2907	81349		
RC07GF682J	81349	9	44	2N2907A	81349	9	14
RC07GF683J	81349	4	33	2N404	81349	9	16
RC07GF683J	81349			2N706	81349	4	12
RC07GF683J	81349	5	12	2N706			
RC07GF683J	81349	6	11	2N706	81349		
RC07GF683J	81349			2N706		6	6
RC07GF683J	81349	8	29	2N706	81349		
RC07GF684J	81349	5	10	2N706	81349		

SECTION IV

NATIONAL STOCK NUMBER AND PART NUMBER INDEX

TM 11-5815-310-34P

PART NUMBER	Text	FIG. NO.	ITEM NO.	PART NUMBER	FSCN	FIG. NO.	ITEM NO.
2N930	81349			5815750104Z	72982	9	
2N930	81349	8	14	6105880832	06540		4
2N930	81349			62000298	96238	10	2
280III	08071	13	12	62020830	96238		1
301002-104	80294	3	26	62020912-001	96238	11	3
34-20P5	96238		11	62020912-002	96238		
371B3	81349			67467-1	09769	10	2
401N6	81349	ii	1	67467-1	09769	13	7
43000216	96238			80200010	96238	2	
43020109	96238	14	6	80200020	96238	3	8
4586-2B	96238		11	80200030	96238	2	
48000299	96238	11	11	80200040	96238		3
48060010	96238	3	48	80200050	96238	2	10
48061045-003	96238			80200070	96238	2	
28060344-006	96238	12	11	80200080	96238		
48092014	96238	2		80200100	96238	3	1
55025074-003	96238	2	10	80200101	96238		
56030039-001	96238		15	80600-743	04009	10	3
56030039-002	96238	12	1	80600-743	04009	15	21
57030288	96238			90200006	96238	2	1
57030289	96238	15	4				

LATEST NATIONAL STOCK NUMBER ASSIGNMENTS

STOCK NUMBER	NO.	ITEM NO.	STOCK NUMBER	FIGURE NO.	ITEM NO.
5340-00-008-3676	12	15	5905-00-682-4103		12
5340-00-008-3677	12	1	5910-00-710-0022	5	
5910-00-051-4590	3	3	4730-00-719-2955		1
5310-00-154-1830		19	2805-00-730-6710	15	4
5310-00-058-2951	12	5	5910-00-733-4377	8	
5310-00-058-6867	10	23	6105-00-762-5070	13	2
5310-00-062-0912	10	17	5910-00-781-38731	8	1
5310-00-062-0912		4	5961-00-782-7610	13	
5310-00-062-0912	11	3	5905-00-786-8306	9	45
5310-00-062-0912		8	5910-00-826-2723		
5310-00-062-0912	15	10	5910-00-831-4182	13	8
5910-00-081-8526		4	5905-00-831-6134		31
5910-00-081-8526	4	2	5905-00-831-6134	8	
5910-00-116-6617	9	4	5910-00-889-4905		5
5945-00-126-1743		14	5910-00-891-2155	4	
5310-00-209-4446	13	15	5910-00-891-2155		1
5310-00-271-4645	15	16	5910-00-891-2155	8	
5905-00-279-2547		44	5961-00-903-7476	9	13
5310-00-427-5458	12	2			6
5910-00-451-5899	9	5	5961-00-905-2962	3	14
5999-00-455-8597		48	5961-00-938-1747		15
5935-00-469-8108	13	1		8	14
5815-00-483-1518		1	5961-00-938-1747		
5935-00-495-2519		9	5910-00-943-0336	13	17
5935-00-495-2521	12	14			
5935-00-498-5506		22	5910-00-949-4827		1
5935-00-502-3126	13	11	5905-00-965-9114	8	
5905-00-515-2334		11	5905-00-975-1650		20
3120-00-571-6663	13	12		11	7
1015-00-620-2083	15				

LATEST PART NUMBER ASSIGNMENT

PART NUMBER	FSCM	FIG. NO.	ITEM NO.
MB51957-15	96906		12
MS51953-30	96906	9	57
9714CA0440	96238	9	53
	06540		



# SOMETHING WRONG WITH THIS MANUAL?

THEN, JOT DOWN THE DOPE ABOUT IT ON THIS FORM. TEAR IT OUT, FOLD IT AND DROP IT IN THE MAIL!

FROM: (YOUR UNIT'S COMPLETE ADDRESS)  
Corranier  
Stateside Army Depot  
ATTN: AUSA-US  
Stateside, N.J. 07703

DATE 10 July 1975

PUBLICATION NUMBER: TM 11-5840-340-12      DATE: 23 Jan 74      TITLE: Radar Set AN/SPC-76

BE EXACT... PIN-POINT WHERE IT IS      IN THIS SPACE TELL WHAT IS WRONG AND WHAT SHOULD BE DONE ABOUT IT:

PAGE NO.	PARA-GRAPH	FIGURE NO.	TABLE NO.	
2-25	2-28			<p>Recommend that the installation antenna alignment procedure be changed through to specify a 2° IFF antenna lag rather than 1°.</p> <p>REASON: Experience has shown that with only a 1° lag, the antenna servo system is too sensitive to wind gusting in excess of 20 knots, and has a tendency to rapidly accelerate and decelerate as it hunts, causing strain to the drive train. Hunting is minimized by adjusting the lag to 2° without degradation of operation.</p>
3-10	3-3		3-1	<p>Item 5, Function column. Change "2 db" to "3db."</p> <p>REASON: The adjustment procedure for the TRANS POWER FAULT indicator calls for a 3 db (500 watts) adjustment to light the TRANS POWER FAULT indicator.</p>
5-6	5-8			<p>Add new step f.1 to read, "Replace cover plate removed in step e.1, above."</p> <p>REASON: To replace the cover plate.</p>
		F03		<p>Zone C 3. On J1-2. change "+24 VDC to "+5 VDC."</p> <p>REASON: This is the output line of the 5 VDC power supply. + 24 VDC is the input voltage.</p>

TEAR ALONG DOTTED LINE

TYPED NAME, GRADE OR TITLE, AND TELEPHONE NUMBER: SSG I. M. DeSpirito 999-1776      SIGN HERE: *SSG I. M. DeSpirito*



FILL IN YOUR  
UNIT'S ADDRESS

FOLD BACK

DEPARTMENT OF THE ARMY

POSTAGE AND FEES PAID  
DEPARTMENT OF THE ARMY  
BOB 314



OFFICIAL BUSINESS  
PENALTY FOR PRIVATE USE \$300

Commander  
US Army Electronics Command  
ATTN: DRSEL-MA-Q  
Fort Monmouth, New Jersey 07703

CUT ALONG DOTTED LINE

FOLD BACK

REVERSE OF DA FORM 2026.2 (TEST)





FILL IN YOUR  
UNIT'S ADDRESS

FOLD BACK

DEPARTMENT OF THE ARMY

POSTAGE AND FEES PAID  
DEPARTMENT OF THE ARMY  
DDO 314



OFFICIAL BUSINESS  
PENALTY FOR PRIVATE USE \$300

Commander  
US Army Electronics Command  
ATTN: DRSEL-MA-Q  
Fort Monmouth, New Jersey 07703

FOLD BACK

REVERSE OF DA FORM 2026-2 (TEST)

RECOMMENDED CHANGES TO EQUIPMENT TECHNICAL MANUALS



THEN... JOT DOWN THE DOPE ABOUT IT ON THIS FORM. TEAR IT OUT, FOLD IT AND DROP IT IN THE MAIL!

# SOMETHING WRONG WITH THIS MANUAL?

FROM: (YOUR UNIT'S COMPLETE ADDRESS)

DATE

PUBLICATION NUMBER

DATE

TITLE

BE EXACT... PIN-POINT WHERE IT IS

IN THIS SPACE TELL WHAT IS WRONG AND WHAT SHOULD BE DONE ABOUT IT:

PAGE NO.	PARA-GRAPH	FIGURE NO.	TABLE NO.
----------	------------	------------	-----------

TEAR ALONG DOTTED LINE

TYPED NAME, GRADE OR TITLE, AND TELEPHONE NUMBER

SIGN HERE:

DA FORM 2028-2 (TEST)  
AUG 74

P.S.--IF YOUR OUTFIT WANTS TO KNOW ABOUT YOUR MANUAL "FIND" MAKE A CARBON COPY OF THIS AND GIVE IT TO YOUR HEADQUARTERS.

FILL IN YOUR  
UNIT'S ADDRESS

FOLD BACK

DEPARTMENT OF THE ARMY

\_\_\_\_\_  
\_\_\_\_\_

OFFICIAL BUSINESS  
PENALTY FOR PRIVATE USE \$300

POSTAGE AND FEES PAID  
DEPARTMENT OF THE ARMY  
DGD 114



Commander  
US Army Electronics Command  
ATTN: DRSEL-MA-Q  
Port Monmouth, New Jersey 07703

CUT ALONG DOTTED LINE

FOLD BACK

REVERSE OF DA FORM 2026-2 (TEST)

By Order of the Secretary of the Army:

Official:

PAUL T. SMITH

Major, General, United States Army  
The Adjutant General

FRED C. WEYAND  
General, United States Army  
Chief of Staff

USASA (2)

COE (1)

USAARENBD (1)

DARCOM (1)

TRADOC (2)

OS Maj Comd (4)

LOGCOMDS (8)

MICOM (2)

TECOM (2)

USAC (4)

USACC-A (2)

USACC-EUR (2)

USACC-PAC (2)

USACC-SO (2)

MDW (1)

America (2)

Corps (2)

HISA (Ft Monmouth) (33)

Svc Colleges (1)

USASESS (5)

USAADS (2)

USAFAS (2)

USAARMS (2)

USAIS (2)

USAES (2)

USAICS (3)

MAAG (1)

USARMIS (1)

Instl (2) except

Fort Gillam (10)

Fort Gordon (10)

Fort **Huachuca** (10)

Fort **Carson** (5)

Ft Richardson (ECOM) (2)

LBAD (14)

SAAD (80)

TOAD (14)

SHAD (8)

Sig FLDMS (1)

USAERDAW (1)

USAERDAW (1)

Units org under fol TOE:

(1 cy each unit)

11-98

11-117

11-127

11-500 (AA-AC)

**NG: None**

**USAR: None**

For explanation of abbreviations used, see AR 810-50.

DEPARTMENT OF THE ARMY  
US ARMY AG PUBLICATIONS CENTER  
1235 WOODSON ROAD  
ST. LOUIS, MISSOURI 63114  
OFFICIAL BUSINESS  
PENALTY FOR PRIVATE USE \$300

NO POSTAGE AND FEES PAID  
DEPARTMENT OF THE ARMY  
DDO 314

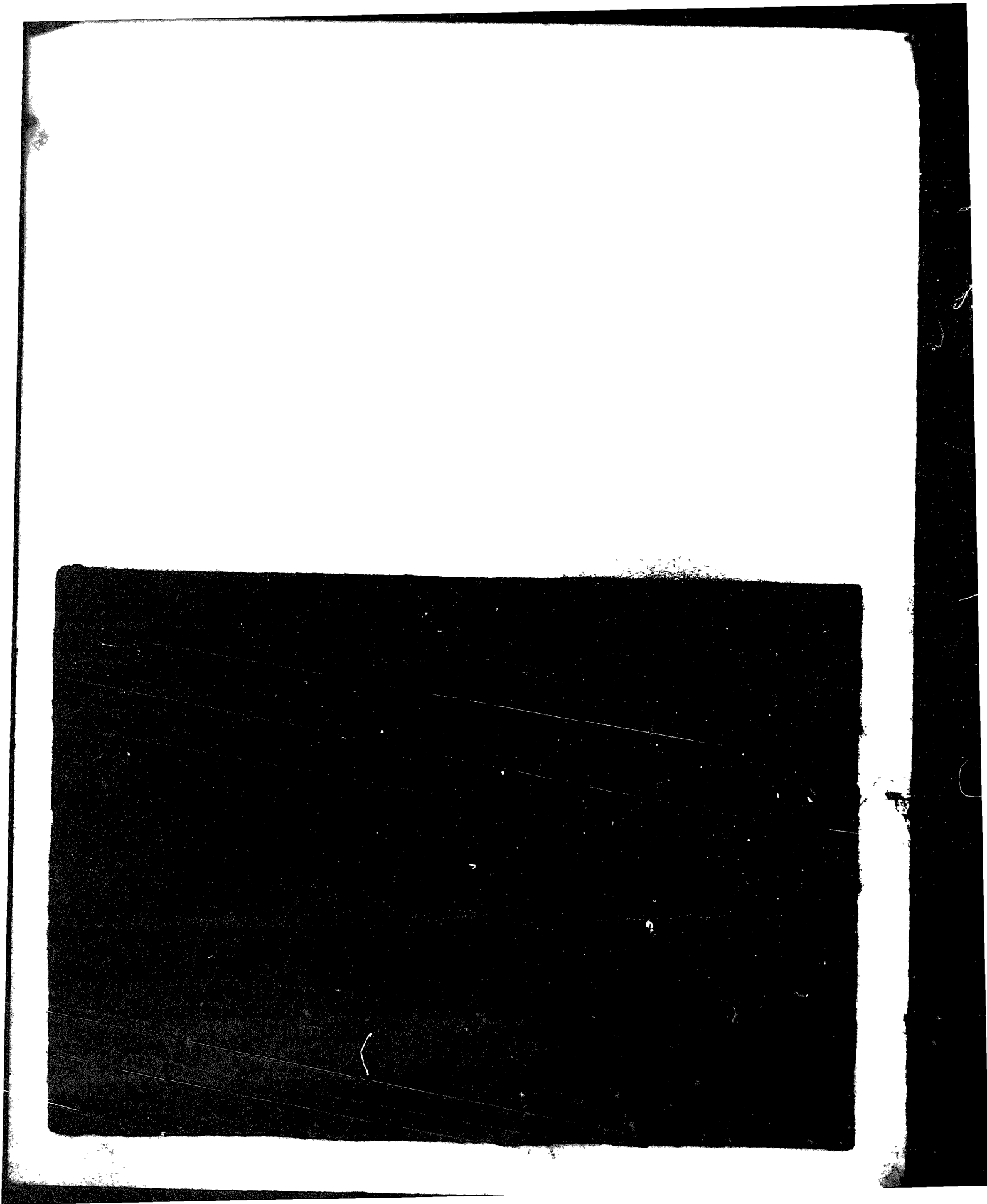


**END**

**02-05-83**

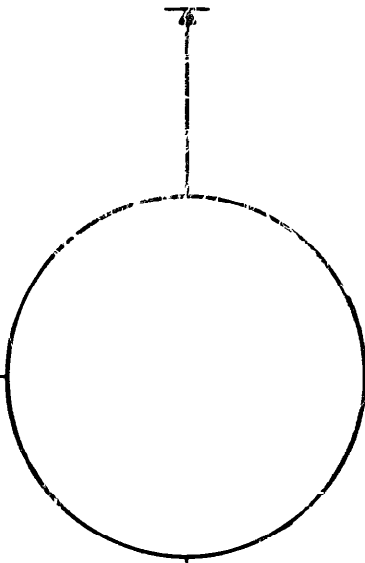
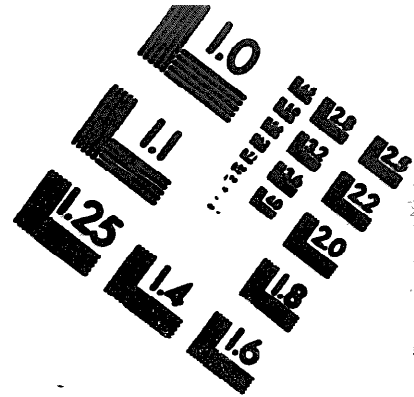
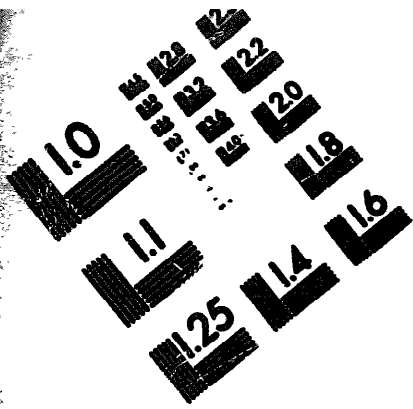
**DATE**





DEPARTMENT OF THE ARMY

MICROFORM  
TEST TARGET



150 MM

1.0 mm (e= .81 mm)

ABCDEFGHIJKLMN OPQRSTUVWXYZ 1234567890  
abcdefghijklmnopqrstuvwxyz \$%&'()\*+,-./:;=>?@\*~

1.5 mm (e= 1.09 mm)

ABCDEFGHIJKLMN OPQRSTUVWXYZ 1234567890  
abcdefghijklmnopqrstuvwxyz \$%&'()\*+,-./:;=>?@\*~

2.0 mm (e= 1.37 mm)

ABCDEFGHIJKLMN OPQRSTUVWXYZ  
abcdefghijklmnopqrstuvwxyz  
1234567890 \$%&'()\*+,-./:;=>?@\*~

2.5 mm (e= 1.77 mm)

ABCDEFGHIJKLMN OPQRSTUVWXYZ  
abcdefghijklmnopqrstuvwxyz  
1234567890 \$%&'()\*+,-./:;=>?@\*~

1.0 mm (e= .81 mm)

ABCDEFGHIJKLMN OPQRSTUVWXYZ 1234567890  
abcdefghijklmnopqrstuvwxyz \$%&'()\*+,-./:;=>?@\*~

1.5 mm (e= 1.09 mm)

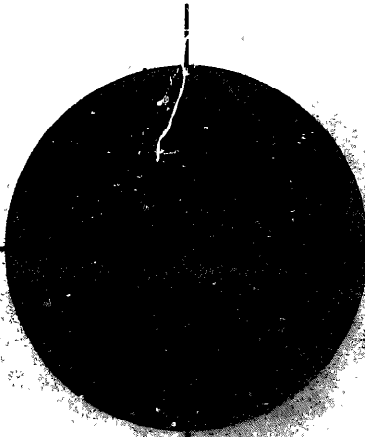
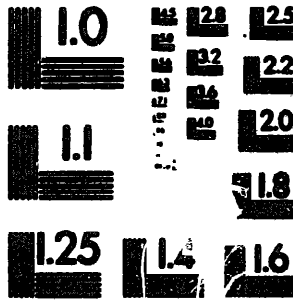
ABCDEFGHIJKLMN OPQRSTUVWXYZ 1234567890  
abcdefghijklmnopqrstuvwxyz \$%&'()\*+,-./:;=>?@\*~

2.0 mm (e= 1.37 mm)

ABCDEFGHIJKLMN OPQRSTUVWXYZ  
abcdefghijklmnopqrstuvwxyz  
1234567890 \$%&'()\*+,-./:;=>?@\*~

2.5 mm (e= 1.77 mm)

ABCDEFGHIJKLMN OPQRSTUVWXYZ  
abcdefghijklmnopqrstuvwxyz  
1234567890 \$%&'()\*+,-./:;=>?@\*~



200 MM



250 MM